



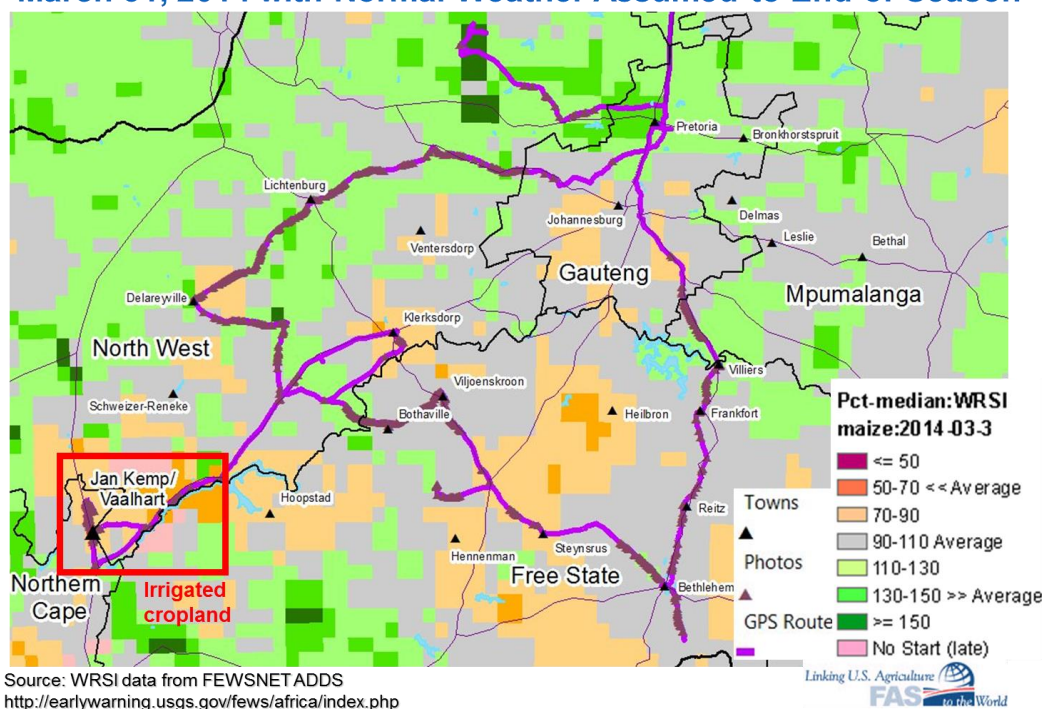
United States  
Department of  
Agriculture

Foreign  
Agricultural  
Service

Circular Series  
WAP 4-14  
April 2014

# World Agricultural Production

## WRSI (Water Requirement Satisfaction Index) Anomaly on March 31, 2014 with Normal Weather Assumed to End-of-Season



### South Africa Corn: Record Yield Expected

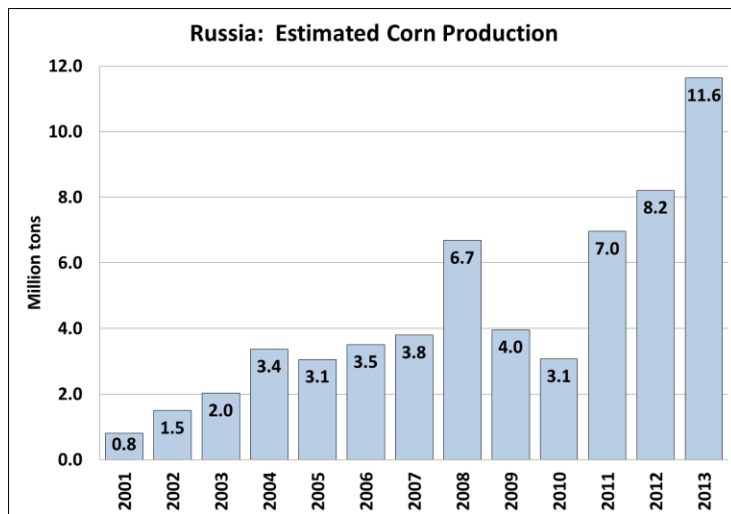
South Africa's 2013/14 corn production is forecast at 14.0 million tons, up 1.0 million tons from last month and up 1.6 million from last year. Corn area is forecast at 3.20 million hectares, unchanged from last month but slightly less than last year's area of 3.24 million hectares. The forecast yield of 4.38 tons per hectare is a record yield due to timely and well-above-average rainfall during February and March in the western and central Corn Belt when the crop was in the critical pollination and grain-filling stages.

Seasonal rains were favorable throughout most of the country for planting in November and December but January's rainfall was below-average in the western and central part of the country, which stressed the crop during the vegetative stage. However, above-average rainfall from late January through March revived the crop and national yields are now expected to reach record-levels.

Approved by the World Agricultural Outlook Board

USDA/FAS personnel traveled within South Africa's corn-belt during mid-March and observed good to excellent crop conditions, with interviewed farmers and traders reporting a bumper harvest expected for most regions. MODIS-NDVI satellite imagery with 250-meter spatial resolution indicates that corn yields should be near average in the east and well above-average in the central and western part of the country. *(For more information, please contact Curt Reynolds, PhD, 202-690-0134.)*

### Russia Corn: Production Estimate Revised Higher



USDA estimates Russia corn production for 2013/14 at a record 11.6 million tons, up nearly 1.0 million or 8.9 percent from last month and up 3.4 million or 42 percent from last year. The revision is based on final data from Rosstat (the State Statistical Committee of Russia). Preliminary data released in January indicated a corn harvest of 10.7 million tons, but the final data released in March report production at 11.6 million. Harvested area is estimated at 2.3 million hectares against 1.9

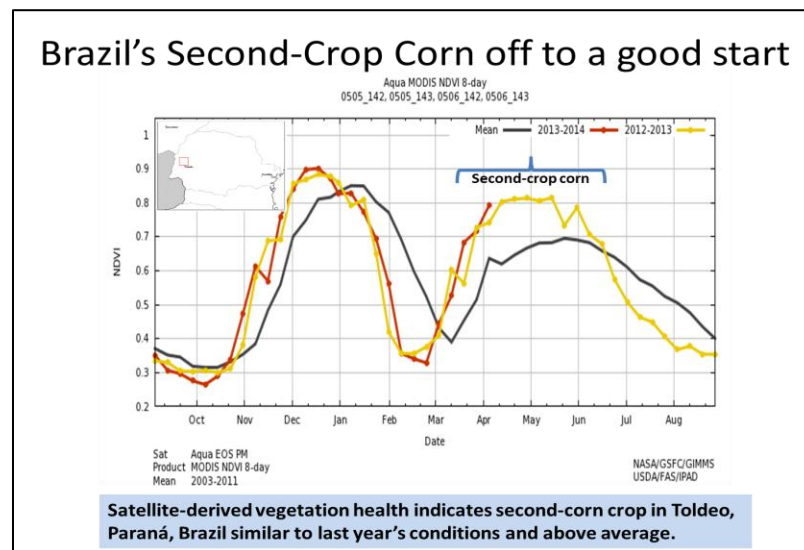
million last year. Yield is estimated at a record 5.01 tons per hectare, up 18 percent from last year and 32 percent above the 5-year average. *(For more information, please contact Mark Lindeman, 202-690-0143.)*

### Brazil Corn: Rains Improve Yield Potential for Second Crop

FAS forecasts Brazil corn production for 2013/14 at 72.0 million tons, up 2 million from last month or 2.9 percent, but down 9.5 million tons or 12 percent from last year's revised record. Area is estimated at 14.7 million hectares, unchanged from last month, but down 1.1 million hectares or 7.0 percent from last year. Corn yield is forecast at 4.90 tons per hectare, up 2.9 percent from last month, but down 5.0 percent from the revised record level of 5.16 tons per hectare last year.

Production is raised due to better yield potential for safrinha (second-crop) corn. Planting of second-crop corn began in February 2014. Mato Grosso is the largest producer, about 42 percent of the *safrinha* crop, and other key areas are Paraná, Mato Grosso do Sul and Goiás. All areas have been receiving beneficial, above-average precipitation. Planting in Mato Grosso was delayed due to heavy rains in late February.

Vegetation health, as measured by satellite-derived vegetation indices, indicates biomass similar to last year in Parana, Mato Grosso do Sul and Goias. So far, Mato Grosso is not developing as well as last year. The critical flowering and grain-fill stages for the second-crop corn will occur in late April to early May. Rainfall during these months will be a key factor to final yields.



Corn area is down 7 percent or 1.1 million hectares from last year. First-corn area is lower by 0.4 and second-corn area is down by 0.7 million hectares. Farmers reduced first-corn area because soybeans have more favorable price and profitability outlooks. For second-corn area in Mato Grosso, low internal corn prices and increased costs of production resulted in corn becoming unprofitable. Second-crop corn area is expected to be reduced by more than 20 percent in the state. Nationally, second-season corn production is typically exported and first-season corn is used for livestock. *(For more information, please contact Bob Tetrault at 202-720-1071.)*

### **Brazil Soybeans: Excessive Rain in Mato Grosso at Harvest Lowers Yield**

USDA forecasts Brazil's 2013/14 soybean production at 87.5 million tons, down 1.0 million or 1.1 percent from last month but up 5.5 million tons or 6.7 percent from last year. Harvested area is forecast at a record 29.9 million hectares, up 0.4 million hectares from last month and up 2.2 million hectares or 7.9 percent from last year. Yield is forecast at 2.93 tons per hectare, down 3.9 percent from last month due to the hot and dry conditions in the south.

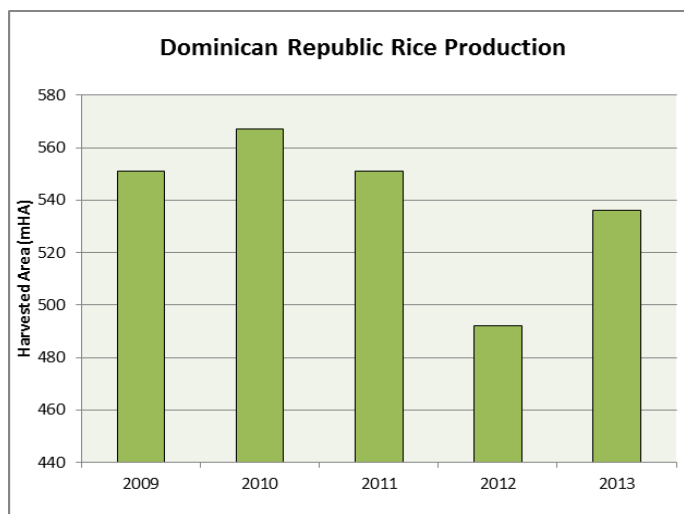
Brazil's soybean harvest reached 73 percent as of the end of March, faster than the 5-year average of 64 percent. Soybean yield potential decreased due to dryness in the south and too much rain at harvest in Mato Grosso. About 40 percent of Brazil's soybean production was subject to extremely hot and dry conditions in early February. States affected were Paraná, Rio Grande do Sul, Santa Catarina, Sao Paulo, and Minas Gerais states. Rains arrived by mid-February and rain has continued in March providing much needed relief, especially in Rio Grande do Sul. In the other states, however, soybean yield potential did not recover.

Meanwhile in Mato Grosso, the harvest pace for the longer-cycle soybeans was interrupted by heavy rains in late February and continuing into March causing yield losses, some quality

damage and delays to planting safrinha corn. Harvest is nearly complete and sources have backed off the previously forecasted record state yields, but yields remain above average.

Brazil's soybean area increased to 29.9 million hectares due to second-crop soybeans. Mato Grosso is planting second-crop soybeans for the first time. Soybeans following soybeans directly in rotation are at higher risk for increasing pest pressures such as Asiatic rust, whiteflies, and Oldworld bollworm. Second-crop soybeans are planted in February and harvested 90 to 100 days later, well before the mid-June, soybean-free period starts. The period from June to mid-September is soybean-free to lower the inoculum sources for Asiatic rust. Yield potential for second-crop soybeans is considered low and estimates range between 2 and 2.5 tons per hectare. (For more information, please contact Bob Tetrault at 202-720-1071.)

### **Dominican Republic Rice: Production Rebounds from Last Year**



USDA forecasts Dominican Republic milled rice production for 2013/14 at 536,000 metric tons, up nearly 8.9 percent from last year. The increase is attributed to favorable weather during the main growing season (May through August). The crop benefited from favorable rainfall coupled with the absence of tropical storm activity during the main growing season. Harvested area is estimated at 161,000 hectares, unchanged from last year. Yield is forecast at a near-record 4.99 metric tons per hectare, up 9.4 percent from last year

(when yield was reduced by drought), and 5.9 percent above the 5-year average.

The Dominican Republic has two rice-growing cycles. The spring/summer crop, which accounts for 75 percent of total production, is harvested in the August. The second cycle is planted in the fall and winter and is harvested in May. Nearly all rice is grown under irrigated conditions. *(For more information, please contact Arnella Trent at 202-720-0881.)*

### **India Millet: Production Less Than Previously Projected**

India's 2013/14 millet production is estimated at 10.6 million tons, down 7.8 percent from last month and down 1.5 percent from last year. The production has been revised down primarily due to decline in area harvested. The harvested area is estimated at 9.2 million hectares, down 8.0 percent from last month and down 1.1 percent from last year. The final yield estimate is slightly above the 5-year average at 1.15 tons per hectare.

India's millet (*including bajra, ragi, and small millets*) is grown during the *kharif* (monsoon) season (June-September). In recent years millet production has been facing competition from other summer crops such as cotton, soybeans, and pulses, which that has led to a decline in area. The 2013 monsoon rainfall was characterized as normal and most major millet growing regions

received favorable rainfall. During the months of June-July, cumulative rainfall in these states was very favorable compared to last year, promoting good crop growth and development. Millet is mainly produced in Rajasthan, Maharashtra, Karnataka, Uttar Pradesh, Gujarat, Madhya Pradesh, and Haryana. *(For more information, please contact Dath Mita, PhD at 202-720-7339)*

### **China Barley: Production Revised Downward**

China's 2013/14 barley production is estimated at 1.5 million tons, down 0.8 million or 35 percent from last month and down 7.7 percent from last year's crop of 1.63 million tons. Estimated area for 2013/14 was lowered to 450,000 hectares, down 29 percent from last month and down 8.2 percent from last year's revised area. The estimated yield of 3.3 million tons per hectare is equal to last year's revised yield but below the 5-year average. The changes are based on official data from China's National Bureau of Statistics. Farmers in Jiangsu and Gansu provinces reportedly have switched from barley to more profitable crops such as corn and winter wheat. Unlike corn and wheat, barley production is not supported by the government (through subsidies or purchasing programs) since it's not considered important for food security. Barley in China is mainly used for beer production, which has been steadily increasing for the past decade. Barley imports for beer rose by 10 percent in 2013/14, mostly from Australia, Canada, and Argentina, due to lower domestic barley production. *(For more information, please contact Paulette Sandene at 202-690-0133.)*



## World Agricultural Production

### U.S. Department of Agriculture

Foreign Agricultural Service / Office of Global Analysis  
International Production Assessment Division (IPAD / PECAD)

Ag Box 1051, Room 4630, South Building

Washington, DC 20250-1051

<http://www.pecad.fas.usda.gov/>

Telephone: (202) 720-1157

Fax: (202) 720-1158

This report uses information from the Foreign Agricultural Service's (FAS) global network of agricultural attachés and counselors, official statistics of foreign governments and other foreign source materials, and the analysis of economic data and satellite imagery. Estimates of foreign area, yield, and production are from the International Production Assessment Division, FAS, and are reviewed by USDA's Inter-Agency Commodity Estimates Committee. Estimates of U.S. area, yield, and production are from USDA's National Agricultural Statistics Service. Numbers within the report may not add to totals because of rounding. This report reflects official USDA estimates released in the World Agricultural Supply and Demand Estimates (WASDE-528), April 9, 2014.

**Printed copies are available from the National Technical Information Service. Download an order form at [http://www.ntis.gov/products/specialty/usda/fas\\_a-g.asp](http://www.ntis.gov/products/specialty/usda/fas_a-g.asp), or call NTIS at 1-800-363-2068.**

The FAS International Production Assessment Division prepared this report. The next issue of World Agricultural Production will be released after 12:00 p.m. Eastern Time, May 9, 2014.

#### Conversion Table

##### Metric tons to bushels

Wheat, soybeans	=	MT * 36.7437
Corn, sorghum, rye	=	MT * 39.36825
Barley	=	MT * 45.929625
Oats	=	MT * 68.894438

##### Metric tons to 480-lb bales

Cotton	=	MT * 4.592917
--------	---	---------------

##### Metric tons to hundredweight

Rice	=	MT * 22.04622
------	---	---------------

##### Area & weight

1 hectare	=	2.471044 acres
1 kilogram	=	2.204622 pounds



For further information, contact:  
**U.S. Department of Agriculture**  
**Foreign Agricultural Service**  
**Office of Global Analysis**  
International Production Assessment Division  
Ag Box 1051, Room 4630, South Building  
Washington, DC 20250-1051

Telephone: (202) 720-1157

Fax: (202) 720-1158

---

### **GENERAL INFORMATION**

Director	Derrick Williams III	202-690-0131	derrick.williams@fas.usda.gov
Deputy Director	Paul Provance	202-720-2974	paul.provance@fas.usda.gov
USDA Remote Sensing Advisor	Glenn Bethel	202-720-1280	glenn.bethel@fas.usda.gov
Sr. Analyst/Technical Lead	Curt Reynolds, PhD	202-690-0134	curt.reynolds@fas.usda.gov
Sr. Analyst/Satellite Imagery	Dath Mita, PhD	202-720-7339	mita.dath@fas.usda.gov
Archives Manager/Technical Lead			
Sr. Analyst/ Global Special	Jim Crutchfield	202-690-0135	james.crutchfield@fas.usda.gov
Projects Manager/Technical Lead			
Sr. Analyst/Technical Lead	Robert Tetrault	202-720-1071	robert.tetrault@fas.usda.gov
GIS Analyst/WAP Coordinator	Justin Jenkins	202-720-0419	justin.jenkins@fas.usda.gov
Program Analyst	Mary Jackson	202-720-0886	mary.jackson@fas.usda.gov
Administrative Support Specialist	Rishan Chaudhry	202-720-1157	rishan.chaudhry@fas.usda.gov
Administrative Assistant/COTR	Terri Lagarde	202-720-1157	terri.lagarde@fas.usda.gov

### **COUNTRY- AND REGION-SPECIFIC INFORMATION**

South America, Argentina and Colombia	Denise McWilliams, PhD	202-720-0107	denise.mcwilliams@fas.usda.gov
Western and Central Europe, and North Africa	Bryan Purcell	202-690-0138	bryan.purcell@fas.usda.gov
Russia, Kazakhstan, Ukraine, and other FSU-12 countries	Mark Lindeman	202-690-0143	mark.lindeman@fas.usda.gov
Canada, Caribbean, Sri Lanka, and Bangladesh	Arnella Trent	202-720-0881	arnella.trent@fas.usda.gov
East Asia, China, and Japan	Paulette Sandene	202-690-0133	paulette.sandene@fas.usda.gov
India, Pakistan, and Nepal	Dath Mita, PhD	202-720-7339	mita.dath@fas.usda.gov
Sub-Saharan Africa, Mexico, Nigeria and South Africa	Curt Reynolds, PhD	202-690-0134	curt.reynoldsc@fas.usda.gov
S.E. Asia, Indonesia, Thailand, Malaysia, Cambodia, and Vietnam	Michael Shean	202-720-7366	michael.shean@fas.usda.gov
Brazil, Venezuela, Central America, Australia, New Zealand, Papua New Guinea, and South Pacific Islands	Robert Tetrault Jim Crutchfield	202-720-1071 202-690-0135	robert.tetrault@fas.usda.gov james.crutchfield@fas.usda.gov
Middle East, Afghanistan, Iraq, Iran, Syria	Bill Baker, PhD	202-260-8109	bill.baker@fas.usda.gov
Western United States	Justin Jenkins	202-720-0419	justin.jenkins@fas.usda.gov
Eastern United States	Paul Provance	202-720-2974	paul.provance@fas.usda.gov
Crop Analyst	Vacant		





The Foreign Agricultural Service (FAS) updates its production, supply and distribution (PSD) database for cotton, oilseeds, and grains at 12:00 p.m. on the day the *World Agricultural Supply and Demand Estimates* (WASDE) report is released. This circular is released by 12:15 p.m.

**FAS Reports and Databases:**

Current *World Market and Trade and World Agricultural Production* Reports:

<http://apps.fas.usda.gov/psdonline/psdDataPublications.aspx>

Archives *World Market and Trade and World Agricultural Production* Reports:

<http://usda.mannlib.cornell.edu/MannUsda/viewTaxonomy.do?taxonomyID=7>

Production, Supply and Distribution Database (PSD Online):

<http://apps.fas.usda.gov/psdonline/psdHome.aspx>

Global Agricultural Trade System (U.S. Exports and Imports):

<http://apps.fas.usda.gov/gats/default.aspx>

Export Sales Report:

<http://apps.fas.usda.gov/esrquery/>

Global Agricultural Information Network (Agricultural Attaché Reports):

<http://gain.fas.usda.gov/Pages/Default.aspx>

**Other USDA Reports:**

World Agricultural Supply and Demand Estimates (WASDE):

<http://www.usda.gov/oce/commodity/wasde/>

Economic Research Service:

<http://www.ers.usda.gov/topics/crops>

National Agricultural Statistics Service:

<http://www.nass.usda.gov/Publications/>



**Table 01 World Crop Production Summary**  
**Million Metric Tons**

Commodity	World -	Total Foreign	North America			European Union -	Former Soviet -	Asia (WAP)				South America				Selected Other		All Others	
			United States	Canada -	Mexico -			Russia -	Ukraine -	China -	India -	Indo- nesia	Paki- stan	Thai- land	Argen- tina	Brazil -	Aus- tralia		South Africa
	---Million metric tons---																		
Wheat																			
2011/12	697.0	642.6	54.4	25.3	3.6	138.2	56.2	22.3	117.4	86.9	nr	25.0	nr	15.5	5.8	29.9	2.0	18.8	95.7
2012/13 prel.	656.5	594.8	61.7	27.2	3.2	133.9	37.7	15.8	121.0	94.9	nr	23.3	nr	9.3	4.4	22.5	1.9	15.5	84.3
2013/14 proj.																			
Mar	712.7	654.8	58.0	37.5	3.4	142.9	52.1	22.3	121.7	93.5	nr	24.0	nr	10.5	5.3	27.0	1.8	18.0	94.8
Apr	712.5	654.6	58.0	37.5	3.4	142.9	52.1	22.3	121.7	93.5	nr	24.0	nr	10.5	5.3	27.0	1.8	18.0	94.6
Coarse Grains																			
2011/12	1,155.0	831.2	323.7	22.9	25.7	149.9	33.1	33.5	199.3	42.3	8.9	3.6	4.4	30.1	75.9	12.3	13.3	11.3	165.0
2012/13 prel.	1,136.2	850.2	286.0	24.4	28.9	145.9	28.7	29.5	212.2	39.9	8.5	3.6	4.7	37.2	84.3	11.2	12.9	10.6	167.8
2013/14 proj.																			
Mar	1,260.8	891.3	369.4	28.7	29.6	158.8	34.7	39.9	224.9	41.7	9.1	3.6	4.9	33.9	72.8	12.4	13.5	13.1	169.6
Apr	1,264.0	894.6	369.4	28.7	29.8	158.8	35.7	39.9	224.3	40.8	9.1	3.6	5.0	33.5	75.1	12.4	14.6	13.1	170.1
Rice, Milled																			
2011/12	466.9	461.1	5.9	nr	0.1	2.1	0.7	0.1	140.7	105.3	36.5	6.2	20.5	1.0	7.9	0.7	nr	0.5	138.8
2012/13 prel.	471.3	464.9	6.3	nr	0.1	2.1	0.7	0.1	143.0	105.2	36.6	5.8	20.2	1.0	8.0	0.8	nr	0.5	140.8
2013/14 proj.																			
Mar	474.8	468.6	6.1	nr	0.1	2.1	0.6	0.1	142.3	105.0	37.4	6.4	20.5	1.0	8.3	0.7	nr	0.5	143.7
Apr	475.6	469.5	6.1	nr	0.1	1.9	0.6	0.1	142.3	105.0	37.4	6.6	20.5	1.0	8.6	0.7	nr	0.5	144.2
Total Grains																			
2011/12	2,318.9	1,934.9	384.0	48.2	29.4	290.2	90.0	55.9	457.4	234.4	45.4	34.8	24.8	46.6	89.6	42.8	15.3	30.6	399.5
2012/13 prel.	2,264.0	1,910.0	354.0	51.6	32.2	281.9	67.1	45.4	476.2	240.1	45.1	32.7	24.9	47.6	96.6	34.5	14.7	26.6	393.0
2013/14 proj.																			
Mar	2,448.2	2,014.7	433.5	66.2	33.2	303.7	87.4	62.3	488.9	240.3	46.5	34.0	25.4	45.4	86.4	40.1	15.3	31.6	408.1
Apr	2,452.1	2,018.6	433.5	66.2	33.3	303.6	88.4	62.3	488.3	239.4	46.5	34.2	25.5	45.0	89.0	40.1	16.4	31.6	408.9
Oilseeds																			
2011/12	447.3	355.0	92.3	18.9	0.9	29.4	12.4	14.2	59.6	36.3	10.2	5.8	0.6	44.8	70.2	5.3	1.3	2.1	42.9
2012/13 prel.	474.6	381.4	93.1	19.0	0.9	27.7	10.9	12.6	59.9	36.8	10.8	5.1	0.6	53.7	84.8	5.6	1.5	2.2	49.4
2013/14 proj.																			
Mar	504.3	407.0	97.3	23.3	0.9	31.3	13.1	17.6	58.6	38.0	11.5	5.1	0.6	57.7	91.5	5.0	1.7	2.3	48.7
Apr	504.5	407.2	97.3	23.3	0.9	31.6	13.6	17.6	58.6	37.6	11.5	5.1	0.6	57.8	90.9	5.0	1.7	2.4	49.1
Cotton																			
2011/12	126.6	111.1	15.6	nr	1.2	1.6	nr	nr	34.0	29.0	0.0	10.6	0.0	1.0	8.7	5.5	0.1	3.4	16.0
2012/13 prel.	123.0	105.7	17.3	nr	1.1	1.5	nr	nr	35.0	28.5	0.0	9.3	0.0	0.8	6.0	4.6	0.0	2.7	16.3
2013/14 proj.																			
Mar	116.7	103.5	13.2	nr	0.8	1.6	nr	nr	32.0	29.0	0.0	9.5	0.0	1.3	7.4	4.1	0.0	2.3	15.4
Apr	116.6	103.8	12.9	nr	0.9	1.6	nr	nr	32.0	29.0	0.0	9.5	0.0	1.3	7.5	4.1	0.0	2.3	15.5

1/ Includes wheat, coarse grains, and rice (milled) shown above.

**Table 02 Wheat Area, Yield, and Production**

Country / Region	Area (Million hectares)				Yield (Metric tons per hectare)				Production (Million metric tons)				Change in Production			
	2011/12	Prel. 2012/13	2013/14 Proj. Mar	2013/14 Proj. Apr	2011/12	Prel. 2012/13	2013/14 Proj. Mar	2013/14 Proj. Apr	2011/12	Prel. 2012/13	2013/14 Proj. Mar	2013/14 Proj. Apr	From last month MMT	Percent	From last year MMT	Percent
<b>World</b>	221.20	215.77	219.50	219.40	3.15	3.04	3.25	3.25	697.04	656.50	712.72	712.52	-0.19	-0.03	56.03	8.53
<b>United States</b>	18.50	19.80	18.27	18.27	2.94	3.12	3.17	3.17	54.41	61.67	57.96	57.96	0.00	0.00	-3.71	-6.02
<b>Total Foreign</b>	202.71	195.98	201.23	201.13	3.17	3.04	3.25	3.25	642.63	594.82	654.75	654.56	-0.19	-0.03	59.74	10.04
<b>China</b>	24.27	24.27	24.15	24.15	4.84	4.99	5.04	5.04	117.40	121.02	121.72	121.72	0.00	0.00	0.70	0.58
<b>South Asia</b>																
India	29.07	29.86	29.60	29.60	2.99	3.18	3.16	3.16	86.87	94.88	93.51	93.51	0.00	0.00	-1.37	-1.44
Pakistan	8.90	8.66	8.67	8.64	2.81	2.69	2.77	2.78	25.00	23.30	24.00	24.00	0.00	0.00	0.70	3.00
Afghanistan	2.10	2.51	2.50	2.50	1.19	1.65	1.62	1.62	2.50	4.15	4.05	4.05	0.00	0.00	-0.10	-2.41
<b>Former Soviet Union -</b>																
Russia	24.81	21.30	23.35	23.40	2.27	1.77	2.23	2.23	56.24	37.72	52.07	52.09	0.02	0.04	14.37	38.10
Ukraine	6.66	5.63	6.57	6.57	3.35	2.80	3.39	3.39	22.32	15.76	22.28	22.28	0.00	0.00	6.52	41.35
Kazakhstan	13.69	12.40	12.95	12.95	1.66	0.79	1.08	1.08	22.73	9.84	13.94	13.94	0.00	0.00	4.10	41.66
Uzbekistan	1.40	1.40	1.40	1.40	4.50	4.79	4.86	4.86	6.30	6.70	6.80	6.80	0.00	0.00	0.10	1.49
<b>European Union - 28</b>	25.83	25.97	25.71	25.71	5.35	5.16	5.56	5.56	138.18	133.88	142.89	142.89	0.00	0.00	9.01	6.73
France	5.41	5.30	5.32	5.32	6.66	7.15	7.27	7.27	35.99	37.91	38.62	38.62	0.00	0.00	0.71	1.87
Germany	3.25	3.06	3.13	3.13	7.01	7.33	7.96	7.96	22.78	22.41	24.87	24.87	0.00	0.00	2.46	10.96
United Kingdom	1.97	1.99	1.62	1.62	7.75	6.66	7.37	7.37	15.26	13.26	11.90	11.90	0.00	0.00	-1.36	-10.26
Poland	2.26	2.08	2.15	2.15	4.13	4.14	4.42	4.42	9.34	8.61	9.50	9.50	0.00	0.00	0.89	10.36
Spain	1.99	2.17	2.15	2.15	3.46	2.35	3.59	3.59	6.90	5.09	7.70	7.70	0.00	0.00	2.61	51.19
Italy	1.62	1.87	1.82	1.82	3.98	4.09	3.92	3.92	6.45	7.63	7.13	7.13	0.00	0.00	-0.50	-6.55
Denmark	0.75	0.61	0.58	0.58	6.47	7.37	7.20	7.20	4.83	4.53	4.14	4.14	0.00	0.00	-0.39	-8.51
Hungary	0.98	1.06	1.09	1.09	4.20	3.74	4.68	4.68	4.11	3.97	5.10	5.10	0.00	0.00	1.13	28.40
Romania	1.95	1.99	2.05	2.05	3.65	2.66	3.61	3.61	7.10	5.30	7.40	7.40	0.00	0.00	2.10	39.62
Bulgaria	1.14	1.19	1.19	1.19	3.92	3.76	4.05	4.05	4.46	4.46	4.83	4.83	0.00	0.00	0.37	8.31
<b>Canada</b>	8.55	9.50	10.44	10.44	2.96	2.86	3.59	3.59	25.29	27.21	37.50	37.50	0.00	0.00	10.30	37.84
<b>Australia</b>	13.90	12.77	13.50	13.50	2.15	1.76	2.00	2.00	29.91	22.46	27.00	27.00	0.00	0.00	4.54	20.21
<b>Middle East</b>																
Turkey	7.70	7.80	7.70	7.70	2.44	1.99	2.34	2.34	18.80	15.50	18.00	18.00	0.00	0.00	2.50	16.13
Iran	6.80	7.00	7.00	7.00	1.99	2.00	2.07	2.07	13.50	14.00	14.50	14.50	0.00	0.00	0.50	3.57
Syria	1.60	1.60	1.55	1.55	2.41	2.31	2.71	2.71	3.85	3.70	4.20	4.20	0.00	0.00	0.50	13.51
<b>North Africa</b>																
Egypt	1.28	1.35	1.40	1.40	6.56	6.30	6.29	6.29	8.40	8.50	8.80	8.80	0.00	0.00	0.30	3.53
Morocco	3.04	3.14	3.28	3.28	1.91	1.23	2.13	2.13	5.80	3.87	7.00	7.00	0.00	0.00	3.13	80.88
<b>Argentina</b>	5.17	3.60	3.50	3.50	3.00	2.58	3.00	3.00	15.50	9.30	10.50	10.50	0.00	0.00	1.20	12.90
<b>Others</b>	17.93	17.22	17.96	17.83	2.46	2.50	2.56	2.57	44.04	43.04	46.00	45.79	-0.21	-0.47	2.75	6.39

**Table 03 Total Coarse Grain Area, Yield, and Production**

Country / Region	Area (Million hectares)				Yield (Metric tons per hectare)				Production (Million metric tons)				Change in Production			
	2011/12	Prel. 2012/13	2013/14 Proj. Mar	Apr	2011/12	Prel. 2012/13	2013/14 Proj. Mar	Apr	2011/12	Prel. 2012/13	2013/14 Proj. Mar	Apr	From last month MMT	Percent	From last year MMT	Percent
<b>World</b>	317.88	316.33	321.98	320.88	3.63	3.59	3.92	3.94	1,154.95	1,136.25	1,260.77	1,264.04	3.27	0.26	127.79	11.25
<b>United States</b>	36.96	39.20	39.87	39.87	8.76	7.30	9.27	9.27	323.73	286.01	369.43	369.43	0.00	0.00	83.43	29.17
<b>Total Foreign</b>	280.92	277.13	282.12	281.01	2.96	3.07	3.16	3.18	831.22	850.24	891.34	894.61	3.27	0.37	44.37	5.22
<b>China</b>	35.61	37.08	38.29	38.16	5.60	5.72	5.87	5.88	199.30	212.19	224.91	224.31	-0.60	-0.27	12.12	5.71
<b>South America</b>																
Brazil	16.23	16.88	15.78	15.83	4.68	4.99	4.62	4.75	75.88	84.25	72.81	75.11	2.30	3.16	-9.14	-10.85
Argentina	6.02	6.84	5.83	5.93	5.00	5.45	5.81	5.64	30.11	37.25	33.87	33.47	-0.40	-1.18	-3.78	-10.15
<b>European Union - 28</b>	30.18	31.36	31.80	31.80	4.97	4.65	4.99	4.99	149.88	145.88	158.77	158.77	0.00	0.00	12.89	8.84
France	3.72	3.98	4.06	4.06	7.40	7.50	7.04	7.04	27.51	29.84	28.59	28.59	0.00	0.00	-1.25	-4.18
Germany	3.24	3.46	3.39	3.39	5.90	6.64	6.58	6.58	19.14	22.99	22.27	22.27	0.00	0.00	-0.72	-3.12
Poland	5.45	5.54	5.62	5.62	3.17	3.57	3.36	3.36	17.31	19.80	18.90	18.90	0.00	0.00	-0.90	-4.56
Spain	3.80	3.79	3.94	3.94	3.73	3.01	4.14	4.14	14.17	11.40	16.29	16.29	0.00	0.00	4.89	42.86
Italy	1.44	1.41	1.33	1.33	7.64	6.47	6.88	6.88	10.97	9.10	9.12	9.12	0.00	0.00	0.02	0.23
Hungary	1.68	1.67	1.71	1.71	5.68	3.78	4.98	4.98	9.53	6.30	8.53	8.53	0.00	0.00	2.22	35.27
United Kingdom	1.11	1.16	1.42	1.42	5.64	5.45	5.80	5.80	6.26	6.29	8.23	8.23	0.00	0.00	1.94	30.86
Romania	3.22	3.38	3.30	3.30	3.84	2.23	3.68	3.68	12.38	7.55	12.15	12.15	0.00	0.00	4.60	60.95
<b>Former Soviet Union -</b>																
Russia	14.38	14.18	15.25	15.49	2.30	2.02	2.28	2.31	33.08	28.66	34.73	35.74	1.00	2.88	7.08	24.69
Ukraine	8.01	8.55	8.78	8.78	4.18	3.45	4.55	4.55	33.48	29.53	39.92	39.92	0.00	0.00	10.39	35.19
Kazakhstan	1.82	1.95	2.25	2.25	1.87	1.17	1.56	1.56	3.40	2.28	3.51	3.51	0.00	0.00	1.23	53.99
<b>Africa</b>																
Nigeria	15.13	12.73	13.25	13.25	1.15	1.46	1.45	1.45	17.42	18.57	19.20	19.20	0.00	0.00	0.63	3.38
South Africa	3.99	4.11	4.06	4.08	3.32	3.13	3.32	3.57	13.26	12.86	13.50	14.56	1.06	7.85	1.70	13.21
Ethiopia	5.36	5.18	5.41	5.41	2.29	2.37	2.14	2.41	12.26	12.29	11.60	13.05	1.45	12.48	0.76	6.22
Egypt	0.91	0.96	0.94	0.94	7.21	7.15	7.12	7.12	6.56	6.86	6.66	6.66	0.00	0.00	-0.20	-2.92
<b>India</b>	26.71	25.08	26.28	25.38	1.58	1.59	1.59	1.61	42.25	39.94	41.74	40.84	-0.90	-2.16	0.90	2.25
<b>Southeast Asia</b>																
Indonesia	3.12	3.00	3.12	3.12	2.84	2.83	2.92	2.92	8.85	8.50	9.10	9.10	0.00	0.00	0.60	7.06
Philippines	2.56	2.56	2.57	2.57	2.79	2.84	2.85	2.85	7.13	7.26	7.32	7.32	0.00	0.00	0.05	0.74
Thailand	1.04	1.11	1.13	1.15	4.19	4.20	4.30	4.31	4.35	4.65	4.86	4.96	0.10	2.06	0.30	6.51
<b>Mexico</b>	8.02	8.92	8.93	9.00	3.20	3.24	3.32	3.32	25.69	28.88	29.64	29.84	0.20	0.67	0.96	3.32
<b>Canada</b>	4.95	5.35	5.39	5.39	4.63	4.57	5.33	5.33	22.92	24.43	28.74	28.74	0.00	0.00	4.31	17.64
<b>Australia</b>	5.27	5.06	5.38	5.38	2.32	2.21	2.31	2.31	12.26	11.17	12.45	12.45	0.00	0.00	1.28	11.47
<b>Turkey</b>	3.99	4.16	4.25	4.25	2.83	2.54	3.08	3.08	11.28	10.58	13.08	13.08	0.00	0.00	2.50	23.64
<b>Others</b>	87.63	82.10	83.45	82.88	1.39	1.51	1.50	1.50	121.87	124.23	124.96	124.01	-0.94	-0.75	-0.21	-0.17

**Table 04 Corn Area, Yield, and Production**

Country / Region	Area (Million hectares)				Yield (Metric tons per hectare)				Production (Million metric tons)				Change in Production			
	2011/12	Prel. 2012/13	2013/14 Proj.		2011/12	Prel. 2012/13	2013/14 Proj.		2011/12	Prel. 2012/13	2013/14 Proj.		From last month		From last year	
			Mar	Apr			Mar	Apr			Mar	Apr	MMT	Percent	MMT	Percent
<b>World</b>	171.69	177.02	176.75	176.90	5.16	4.90	5.47	5.51	886.64	866.94	967.52	973.90	6.39	0.66	106.96	12.34
<b>United States</b>	33.99	35.36	35.48	35.48	9.24	7.74	9.97	9.97	313.95	273.83	353.72	353.72	0.00	0.00	79.88	29.17
<b>Total Foreign</b>	137.70	141.66	141.27	141.42	4.16	4.19	4.34	4.39	572.69	593.11	613.80	620.19	6.39	1.04	27.08	4.57
<b>China</b>	33.54	35.03	36.10	36.10	5.75	5.87	6.03	6.03	192.78	205.61	217.73	217.73	0.00	0.00	12.12	5.89
<b>South America</b>																
Brazil	15.20	15.80	14.70	14.70	4.80	5.16	4.76	4.90	73.00	81.50	70.00	72.00	2.00	2.86	-9.50	-11.66
Argentina	3.60	4.00	3.30	3.40	5.83	6.75	7.27	7.06	21.00	27.00	24.00	24.00	0.00	0.00	-3.00	-11.11
Bolivia	0.32	0.31	0.32	0.32	2.30	2.26	2.30	2.30	0.73	0.70	0.73	0.73	0.00	0.00	0.03	3.57
<b>Mexico</b>	6.07	6.90	6.76	6.83	3.09	3.13	3.21	3.21	18.73	21.59	21.70	21.90	0.20	0.92	0.31	1.43
<b>European Union - 28</b>	9.10	9.70	9.77	9.77	7.48	6.07	6.64	6.64	68.12	58.86	64.89	64.89	0.00	0.00	6.03	10.25
France	1.54	1.63	1.77	1.77	10.20	9.23	8.47	8.47	15.72	15.05	15.00	15.00	0.00	0.00	-0.05	-0.31
Italy	0.97	0.97	0.90	0.90	9.65	7.82	8.44	8.44	9.36	7.59	7.60	7.60	0.00	0.00	0.01	0.13
Hungary	1.23	1.19	1.24	1.24	6.50	3.98	5.47	5.47	7.99	4.74	6.75	6.75	0.00	0.00	2.01	42.38
Romania	2.55	2.73	2.60	2.60	4.12	2.23	3.92	3.92	10.50	6.10	10.20	10.20	0.00	0.00	4.10	67.21
Poland	0.33	0.54	0.61	0.61	7.18	7.35	6.56	6.56	2.39	4.00	4.00	4.00	0.00	0.00	0.00	0.10
<b>India</b>	8.80	8.91	9.50	9.50	2.47	2.50	2.42	2.42	21.76	22.26	23.00	23.00	0.00	0.00	0.74	3.32
<b>Canada</b>	1.27	1.42	1.48	1.48	8.93	9.21	9.59	9.59	11.36	13.06	14.20	14.20	0.00	0.00	1.14	8.73
<b>Indonesia</b>	3.12	3.00	3.12	3.12	2.84	2.83	2.92	2.92	8.85	8.50	9.10	9.10	0.00	0.00	0.60	7.06
<b>Ukraine</b>	3.54	4.37	4.83	4.83	6.44	4.79	6.40	6.40	22.84	20.92	30.90	30.90	0.00	0.00	9.98	47.69
<b>Serbia</b>	1.26	1.30	1.25	1.25	5.08	2.69	4.80	4.80	6.40	3.50	6.00	6.00	0.00	0.00	2.50	71.43
<b>Egypt</b>	0.70	0.75	0.73	0.73	7.86	7.73	7.72	7.72	5.50	5.80	5.60	5.60	0.00	0.00	-0.20	-3.45
<b>Philippines</b>	2.56	2.56	2.57	2.57	2.79	2.84	2.85	2.85	7.13	7.26	7.32	7.32	0.00	0.00	0.05	0.74
<b>Vietnam</b>	1.08	1.16	1.12	1.17	4.30	4.15	4.38	4.43	4.65	4.80	4.90	5.20	0.30	6.04	0.40	8.23
<b>Thailand</b>	1.01	1.08	1.10	1.12	4.26	4.26	4.36	4.38	4.30	4.60	4.80	4.90	0.10	2.08	0.30	6.52
<b>Russia</b>	1.60	1.94	2.12	2.32	4.34	4.24	5.04	5.01	6.96	8.21	10.68	11.64	0.95	8.92	3.42	41.67
<b>Sub-Saharan Africa</b>																
South Africa	3.14	3.24	3.20	3.20	4.06	3.82	4.06	4.38	12.76	12.37	13.00	14.00	1.00	7.69	1.64	13.22
Nigeria	5.15	4.16	4.25	4.25	1.80	1.83	1.81	1.81	9.25	7.63	7.70	7.70	0.00	0.00	0.07	0.92
Ethiopia	2.06	2.01	2.15	2.15	2.95	3.06	2.60	3.02	6.07	6.16	5.59	6.50	0.91	16.28	0.34	5.55
Zimbabwe	1.60	0.96	0.95	0.95	0.91	1.01	0.84	0.84	1.45	0.97	0.80	0.80	0.00	0.00	-0.17	-17.10
<b>Turkey</b>	0.45	0.53	0.58	0.58	8.00	8.38	8.79	8.79	3.60	4.40	5.10	5.10	0.00	0.00	0.70	15.91
<b>Others</b>	32.53	32.54	31.39	31.10	2.01	2.07	2.10	2.15	65.47	67.42	66.07	67.00	0.93	1.40	-0.41	-0.61

**Table 05 Barley Area, Yield and Production**

Country / Region	Area (Million hectares)				Yield (Metric tons per hectare)				Production (Million metric tons)				Change in Production			
	Prel.		2013/14 Proj.		Prel.		2013/14 Proj.		Prel.		2013/14 Proj.		From last month		From last year	
	2011/12	2012/13	Mar	Apr	2011/12	2012/13	Mar	Apr	2011/12	2012/13	Mar	Apr	MMT	Percent	MMT	Percent
<b>World</b>	49.45	50.25	50.77	50.56	2.71	2.59	2.87	2.87	134.19	130.12	145.60	145.24	-0.36	-0.25	15.12	11.62
<b>United States</b>	0.91	1.31	1.21	1.21	3.74	3.65	3.86	3.86	3.39	4.80	4.68	4.68	0.00	0.00	-0.11	-2.36
<b>Total Foreign</b>	48.54	48.94	49.55	49.35	2.69	2.56	2.84	2.85	130.80	125.32	140.92	140.56	-0.36	-0.26	15.24	12.16
<b>Russia</b>	7.70	7.63	8.00	8.02	2.20	1.83	1.92	1.92	16.94	13.95	15.36	15.39	0.03	0.21	1.44	10.30
<b>European Union - 28</b>	11.95	12.53	12.39	12.39	4.34	4.37	4.82	4.82	51.88	54.80	59.71	59.71	0.00	0.00	4.91	8.96
Germany	1.60	1.68	1.58	1.58	5.47	6.19	6.58	6.58	8.73	10.39	10.40	10.40	0.00	0.00	0.01	0.09
France	1.55	1.68	1.63	1.63	5.68	6.74	6.34	6.34	8.78	11.34	10.33	10.33	0.00	0.00	-1.01	-8.90
Spain	2.70	2.68	2.75	2.75	3.09	2.23	3.64	3.64	8.33	5.98	10.00	10.00	0.00	0.00	4.02	67.31
United Kingdom	0.97	1.00	1.22	1.22	5.66	5.51	5.84	5.84	5.49	5.52	7.10	7.10	0.00	0.00	1.58	28.58
Denmark	0.60	0.72	0.69	0.69	5.39	5.39	5.78	5.78	3.25	3.90	3.98	3.98	0.00	0.00	0.08	2.10
Poland	1.02	1.16	0.80	0.80	3.27	3.60	3.63	3.63	3.33	4.18	2.90	2.90	0.00	0.00	-1.28	-30.64
Czech Republic	0.37	0.38	0.38	0.38	4.88	4.23	4.35	4.35	1.81	1.62	1.63	1.63	0.00	0.00	0.01	0.87
Finland	0.43	0.47	0.50	0.50	3.41	3.42	3.91	3.91	1.48	1.61	1.94	1.94	0.00	0.00	0.33	20.41
Sweden	0.32	0.37	0.39	0.39	4.44	4.60	4.96	4.96	1.43	1.70	1.94	1.94	0.00	0.00	0.24	13.89
Italy	0.27	0.25	0.25	0.25	3.52	3.84	3.73	3.73	0.95	0.96	0.93	0.93	0.00	0.00	-0.03	-2.92
Hungary	0.26	0.28	0.27	0.27	3.79	3.61	4.09	4.09	0.99	1.00	1.10	1.10	0.00	0.00	0.10	10.44
Austria	0.15	0.15	0.15	0.15	5.61	4.38	5.41	5.41	0.86	0.66	0.80	0.80	0.00	0.00	0.14	20.85
<b>Ukraine</b>	3.68	3.29	3.23	3.23	2.47	2.11	2.34	2.34	9.10	6.94	7.56	7.56	0.00	0.00	0.63	9.03
<b>Canada</b>	2.40	2.75	2.65	2.65	3.29	2.91	3.87	3.87	7.89	8.01	10.25	10.25	0.00	0.00	2.24	27.93
<b>Australia</b>	3.72	3.62	4.00	4.00	2.21	2.06	2.40	2.40	8.22	7.47	9.60	9.60	0.00	0.00	2.13	28.58
<b>Turkey</b>	3.20	3.30	3.33	3.33	2.19	1.67	2.19	2.19	7.00	5.50	7.30	7.30	0.00	0.00	1.80	32.73
<b>China</b>	0.62	0.49	0.63	0.45	3.71	3.32	3.65	3.33	2.30	1.63	2.30	1.50	-0.80	-34.78	-0.13	-7.75
<b>Iran</b>	1.60	1.68	1.58	1.58	1.81	2.03	2.03	2.03	2.90	3.40	3.20	3.20	0.00	0.00	-0.20	-5.88
<b>Morocco</b>	2.03	1.89	1.69	1.69	1.16	0.63	1.60	1.60	2.34	1.20	2.70	2.70	0.00	0.00	1.50	125.00
<b>Kazakhstan</b>	1.52	1.60	1.84	1.84	1.71	0.94	1.38	1.38	2.59	1.50	2.54	2.54	0.00	0.00	1.04	69.27
<b>Ethiopia</b>	0.95	1.02	1.02	1.02	1.68	1.75	1.60	1.76	1.59	1.78	1.63	1.80	0.17	10.29	0.02	1.01
<b>Belarus</b>	0.70	0.65	0.55	0.55	2.87	3.23	3.09	3.09	2.01	2.10	1.70	1.70	0.00	0.00	-0.40	-19.05
<b>India</b>	0.78	0.77	0.78	0.78	2.13	2.10	2.23	2.23	1.66	1.62	1.74	1.74	0.00	0.00	0.12	7.41
<b>Argentina</b>	1.16	1.50	1.27	1.27	3.88	3.33	3.74	3.74	4.50	5.00	4.75	4.75	0.00	0.00	-0.25	-5.00
<b>Mexico</b>	0.22	0.33	0.22	0.22	2.23	3.15	2.56	2.56	0.49	1.03	0.55	0.55	0.00	0.00	-0.48	-46.71
<b>Iraq</b>	1.13	0.60	1.07	1.07	0.88	0.83	0.88	0.88	1.00	0.50	0.94	0.94	0.00	0.00	0.44	88.80
<b>Algeria</b>	1.00	1.00	0.90	0.90	1.35	1.50	1.67	1.67	1.35	1.50	1.50	1.50	0.00	0.00	0.00	0.00
<b>Others</b>	4.20	4.29	4.41	4.36	1.67	1.73	1.72	1.79	7.03	7.40	7.59	7.82	0.24	3.12	0.43	5.74

**Table 06 Oats Area, Yield, and Production**

Country / Region	Area (Million hectares)				Yield (Metric tons per hectare)				Production (Million metric tons)				Change in Production			
	Prel.		2013/14 Proj.		Prel.		2013/14 Proj.		Prel.		2013/14 Proj.		From last month		From last year	
	2011/12	2012/13	Mar	Apr	2011/12	2012/13	Mar	Apr	2011/12	2012/13	Mar	Apr	MMT	Percent	MMT	Percent
<b>World</b>	10.29	10.20	10.51	10.51	2.18	2.10	2.26	2.26	22.38	21.39	23.73	23.75	0.01	0.05	2.35	11.00
<b>United States</b>	0.38	0.42	0.42	0.42	2.05	2.20	2.29	2.29	0.78	0.93	0.96	0.96	0.00	0.00	0.03	2.91
<b>Total Foreign</b>	9.91	9.77	10.09	10.10	2.18	2.09	2.26	2.26	21.60	20.46	22.78	22.79	0.01	0.05	2.33	11.37
<b>Russia</b>	2.93	2.86	3.00	3.01	1.82	1.41	1.64	1.64	5.33	4.03	4.92	4.93	0.01	0.22	0.91	22.47
<b>Canada</b>	1.08	0.99	1.11	1.11	2.91	2.85	3.50	3.50	3.16	2.81	3.89	3.89	0.00	0.00	1.08	38.34
<b>European Union - 28</b>	2.70	2.68	2.73	2.73	2.94	2.99	3.13	3.13	7.93	8.00	8.53	8.53	0.00	0.00	0.53	6.66
Poland	0.55	0.52	0.51	0.51	2.53	2.83	2.35	2.35	1.38	1.47	1.20	1.20	0.00	0.00	-0.27	-18.26
Finland	0.32	0.34	0.35	0.35	3.42	3.41	3.50	3.50	1.10	1.16	1.23	1.23	0.00	0.00	0.07	5.87
Spain	0.49	0.44	0.45	0.45	2.20	1.53	2.26	2.26	1.08	0.68	1.02	1.02	0.00	0.00	0.34	50.44
Germany	0.14	0.15	0.14	0.14	4.38	5.22	4.64	4.64	0.63	0.76	0.65	0.65	0.00	0.00	-0.11	-14.13
Sweden	0.18	0.19	0.20	0.20	3.89	3.91	4.36	4.36	0.69	0.76	0.85	0.85	0.00	0.00	0.09	11.99
United Kingdom	0.11	0.12	0.18	0.18	5.62	5.14	5.57	5.57	0.61	0.63	0.98	0.98	0.00	0.00	0.35	55.50
France	0.08	0.08	0.10	0.10	4.09	4.83	4.50	4.50	0.32	0.40	0.45	0.45	0.00	0.00	0.05	12.22
Italy	0.13	0.12	0.11	0.11	2.36	2.44	2.64	2.64	0.30	0.29	0.29	0.29	0.00	0.00	0.00	-1.02
Denmark	0.05	0.05	0.05	0.05	4.69	5.83	6.39	6.39	0.23	0.30	0.31	0.31	0.00	0.00	0.01	3.30
Romania	0.18	0.17	0.17	0.17	1.94	1.76	1.88	1.88	0.35	0.30	0.32	0.32	0.00	0.00	0.02	6.67
Czech Republic	0.05	0.05	0.05	0.05	3.64	3.37	3.24	3.24	0.16	0.17	0.15	0.15	0.00	0.00	-0.03	-15.12
Hungary	0.05	0.05	0.05	0.05	2.39	2.64	2.65	2.65	0.13	0.14	0.14	0.14	0.00	0.00	-0.01	-3.57
Austria	0.03	0.03	0.02	0.02	4.40	3.72	4.42	4.42	0.11	0.09	0.11	0.11	0.00	0.00	0.01	13.98
Ireland	0.02	0.02	0.02	0.02	8.00	6.26	8.00	8.00	0.17	0.14	0.17	0.17	0.00	0.00	0.02	16.67
Lithuania	0.06	0.07	0.07	0.07	2.05	2.31	2.14	2.14	0.13	0.16	0.15	0.15	0.00	0.00	-0.01	-8.54
<b>Australia</b>	0.73	0.67	0.75	0.75	1.73	1.67	1.67	1.67	1.26	1.12	1.25	1.25	0.00	0.00	0.14	12.11
<b>Ukraine</b>	0.28	0.30	0.24	0.24	1.81	2.09	1.94	1.94	0.51	0.63	0.47	0.47	0.00	0.00	-0.16	-25.87
<b>China</b>	0.20	0.20	0.20	0.20	3.00	3.00	2.90	2.90	0.60	0.60	0.58	0.58	0.00	0.00	-0.02	-3.33
<b>Belarus</b>	0.17	0.20	0.16	0.16	2.70	3.00	2.81	2.81	0.45	0.60	0.45	0.45	0.00	0.00	-0.15	-25.00
<b>Brazil</b>	0.15	0.17	0.17	0.17	2.31	2.14	2.24	2.24	0.35	0.36	0.38	0.38	0.00	0.00	0.02	5.26
<b>Argentina</b>	0.22	0.26	0.22	0.22	1.57	1.91	2.07	2.07	0.35	0.50	0.45	0.45	0.00	0.00	-0.05	-10.28
<b>Chile</b>	0.10	0.13	0.11	0.11	4.47	5.35	5.41	5.41	0.45	0.68	0.60	0.60	0.00	0.00	-0.09	-12.50
<b>Norway</b>	0.07	0.07	0.07	0.07	3.21	3.26	3.21	3.21	0.23	0.23	0.23	0.23	0.00	0.00	0.00	0.00
<b>Turkey</b>	0.10	0.10	0.10	0.10	2.21	2.21	2.21	2.21	0.21	0.21	0.21	0.21	0.00	0.00	0.00	0.00
<b>Kazakhstan</b>	0.14	0.15	0.22	0.22	1.80	1.33	1.39	1.39	0.26	0.20	0.31	0.31	0.00	0.00	0.11	52.50
<b>Serbia</b>	0.07	0.05	0.05	0.05	1.85	1.70	1.70	1.70	0.12	0.09	0.09	0.09	0.00	0.00	0.00	0.00
<b>Others</b>	0.97	0.96	0.97	0.97	0.41	0.44	0.46	0.46	0.40	0.42	0.44	0.44	0.00	0.00	0.02	4.98

**Table 07 Rye Area, Yield, and Production**

Country / Region	Area (Million hectares)				Yield (Metric tons per hectare)				Production (Million metric tons)				Change in Production			
	Prel.		2013/14 Proj.		Prel.		2013/14 Proj.		Prel.		2013/14 Proj.		From last month		From last year	
	2011/12	2012/13	Mar	Apr	2011/12	2012/13	Mar	Apr	2011/12	2012/13	Mar	Apr	MMT	Percent	MMT	Percent
<b>World</b>	4.90	5.23	5.76	5.76	2.50	2.73	2.86	2.85	12.24	14.28	16.45	16.45	0.00	0.01	2.18	15.25
<b>United States</b>	0.10	0.10	0.11	0.11	1.64	1.76	1.73	1.73	0.16	0.18	0.20	0.20	0.00	0.00	0.02	10.80
<b>Total Foreign</b>	4.80	5.13	5.65	5.65	2.52	2.75	2.88	2.88	12.08	14.10	16.26	16.26	0.00	0.01	2.16	15.30
<b>European Union - 28</b>	2.26	2.36	2.61	2.61	3.05	3.70	3.82	3.82	6.90	8.75	9.96	9.96	0.00	0.00	1.21	13.86
Poland	1.09	1.04	1.20	1.20	2.40	2.77	2.75	2.75	2.60	2.89	3.30	3.30	0.00	0.00	0.41	14.27
Germany	0.61	0.71	0.78	0.78	4.11	5.46	5.77	5.77	2.52	3.88	4.50	4.50	0.00	0.00	0.62	16.04
Spain	0.15	0.16	0.16	0.16	2.46	1.60	2.28	2.28	0.37	0.26	0.37	0.37	0.00	0.00	0.11	44.53
Lithuania	0.04	0.06	0.05	0.05	2.02	2.80	2.40	2.40	0.09	0.16	0.12	0.12	0.00	0.00	-0.04	-23.57
France	0.03	0.03	0.03	0.03	4.43	5.00	5.00	5.00	0.12	0.16	0.15	0.15	0.00	0.00	-0.01	-6.25
Denmark	0.06	0.07	0.09	0.09	5.07	5.91	6.15	6.15	0.29	0.38	0.54	0.54	0.00	0.00	0.15	39.32
Czech Republic	0.03	0.03	0.04	0.04	4.72	4.90	4.43	4.43	0.12	0.15	0.18	0.18	0.00	0.00	0.03	20.41
Austria	0.05	0.05	0.05	0.05	4.39	4.18	4.38	4.38	0.20	0.21	0.21	0.21	0.00	0.00	0.01	2.44
Sweden	0.02	0.02	0.02	0.02	5.82	6.09	5.42	5.42	0.13	0.13	0.13	0.13	0.00	0.00	0.00	-2.99
Hungary	0.03	0.04	0.04	0.04	2.27	2.23	2.50	2.50	0.08	0.08	0.09	0.09	0.00	0.00	0.01	15.38
Slovakia	0.01	0.02	0.02	0.02	3.15	3.06	2.94	2.94	0.04	0.05	0.05	0.05	0.00	0.00	0.00	2.04
Finland	0.03	0.02	0.01	0.01	2.89	2.86	2.25	2.25	0.08	0.06	0.03	0.03	0.00	0.00	-0.03	-55.00
United Kingdom	0.01	0.01	0.01	0.01	7.00	7.00	7.00	7.00	0.04	0.04	0.04	0.04	0.00	0.00	0.00	0.00
Romania	0.01	0.01	0.01	0.01	2.73	2.44	2.50	2.50	0.03	0.02	0.02	0.02	0.00	0.00	0.00	-9.09
Greece	0.02	0.02	0.02	0.02	1.83	1.83	1.83	1.83	0.03	0.03	0.03	0.03	0.00	0.00	0.00	0.00
Portugal	0.02	0.02	0.02	0.02	0.95	0.75	0.94	0.94	0.02	0.01	0.02	0.02	0.00	0.00	0.00	25.00
<b>Russia</b>	1.52	1.42	1.78	1.78	1.95	1.50	1.89	1.89	2.97	2.13	3.36	3.36	0.00	0.06	1.23	57.60
<b>Belarus</b>	0.34	0.60	0.60	0.60	2.39	2.67	2.50	2.50	0.80	1.60	1.50	1.50	0.00	0.00	-0.10	-6.25
<b>Ukraine</b>	0.28	0.30	0.28	0.28	2.08	2.27	2.29	2.29	0.58	0.68	0.64	0.64	0.00	0.00	-0.04	-5.62
<b>Canada</b>	0.10	0.12	0.09	0.09	2.51	2.74	2.47	2.47	0.24	0.34	0.21	0.21	0.00	0.00	-0.13	-37.69
<b>Turkey</b>	0.14	0.14	0.14	0.14	2.50	2.50	2.50	2.50	0.35	0.35	0.35	0.35	0.00	0.00	0.00	0.00
<b>Argentina</b>	0.03	0.02	0.04	0.04	1.41	1.74	1.49	1.49	0.05	0.04	0.05	0.05	0.00	0.00	0.01	30.00
<b>Kazakhstan</b>	0.03	0.05	0.04	0.04	1.12	1.00	1.10	1.10	0.03	0.05	0.04	0.04	0.00	0.00	-0.01	-14.00
<b>Australia</b>	0.06	0.06	0.04	0.04	0.70	0.70	0.57	0.57	0.04	0.04	0.02	0.02	0.00	0.00	-0.02	-50.00
<b>Switzerland</b>	0.00	0.00	0.00	0.00	6.50	6.50	6.50	6.50	0.01	0.01	0.01	0.01	0.00	0.00	0.00	0.00
<b>Others</b>	0.05	0.05	0.05	0.05	2.15	2.25	2.17	2.17	0.11	0.12	0.12	0.12	0.00	0.00	0.00	-1.71



**Table 08 Sorghum Area, Yield, and Production**

Country / Region	Area (Million hectares)				Yield (Metric tons per hectare)				Production (Million metric tons)				Change in Production			
	2011/12	Prel. 2012/13	2013/14 Proj. Mar	2013/14 Proj. Apr	2011/12	Prel. 2012/13	2013/14 Proj. Mar	2013/14 Proj. Apr	2011/12	Prel. 2012/13	2013/14 Proj. Mar	2013/14 Proj. Apr	From last month MMT	Percent	From last year MMT	Percent
<b>World</b>	43.60	38.02	40.16	40.37	1.31	1.52	1.53	1.49	57.21	57.69	61.26	60.14	-1.12	-1.82	2.45	4.25
<b>United States</b>	1.59	2.01	2.64	2.64	3.43	3.13	3.74	3.74	5.45	6.27	9.88	9.88	0.00	0.00	3.61	57.56
<b>Total Foreign</b>	42.01	36.02	37.52	37.73	1.23	1.43	1.37	1.33	51.76	51.42	51.38	50.26	-1.12	-2.17	-1.16	-2.25
<b>Sub-Saharan Africa</b>																
Nigeria	7.09	4.77	5.00	5.00	0.97	1.25	1.30	1.30	6.90	5.94	6.50	6.50	0.00	0.00	0.56	9.37
Sudan	7.26	4.10	5.60	5.60	0.63	1.10	0.68	0.40	4.61	4.52	3.80	2.25	-1.55	-40.82	-2.28	-50.29
Ethiopia	1.92	1.71	1.80	1.80	2.05	2.11	2.06	2.22	3.95	3.60	3.70	4.00	0.30	8.11	0.40	10.99
Burkina	1.68	1.79	1.62	1.80	0.89	1.08	1.11	1.08	1.50	1.92	1.80	1.94	0.14	7.78	0.02	0.83
Tanzania	0.81	0.84	0.85	0.85	1.00	1.00	0.94	0.94	0.81	0.84	0.80	0.80	0.00	0.00	-0.04	-4.65
Niger	2.88	3.11	3.00	3.00	0.28	0.44	0.33	0.43	0.81	1.38	1.00	1.29	0.29	28.70	-0.09	-6.47
Uganda	0.36	0.37	0.35	0.35	1.20	0.90	1.14	0.91	0.44	0.34	0.40	0.32	-0.08	-20.00	-0.02	-4.76
Mozambique	0.64	0.62	0.62	0.62	0.64	0.39	0.66	0.30	0.41	0.24	0.41	0.19	-0.22	-54.15	-0.05	-21.34
Ghana	0.24	0.23	0.25	0.25	1.18	1.21	1.20	1.11	0.29	0.28	0.30	0.28	-0.02	-7.67	0.00	-1.07
South Africa	0.05	0.06	0.06	0.08	2.80	2.33	2.83	2.90	0.14	0.15	0.17	0.23	0.06	34.71	0.08	55.78
<b>South Asia</b>																
India	6.33	6.30	6.00	5.90	0.95	0.84	0.92	0.93	6.03	5.30	5.50	5.50	0.00	0.00	0.20	3.77
Pakistan	0.24	0.24	0.24	0.24	0.60	0.60	0.60	0.60	0.15	0.15	0.15	0.15	0.00	0.00	0.00	0.00
<b>South America</b>																
Argentina	1.00	1.05	1.00	1.00	4.20	4.48	4.60	4.20	4.20	4.70	4.60	4.20	-0.40	-8.70	-0.50	-10.64
Brazil	0.79	0.80	0.80	0.85	2.82	2.62	2.63	2.82	2.22	2.10	2.10	2.40	0.30	14.29	0.30	14.18
<b>Mexico</b>	1.68	1.64	1.90	1.90	3.82	3.76	3.84	3.84	6.43	6.17	7.30	7.30	0.00	0.00	1.13	18.24
<b>China</b>	0.50	0.62	0.60	0.65	4.10	4.10	4.17	4.15	2.05	2.56	2.50	2.70	0.20	8.00	0.14	5.63
<b>Australia</b>	0.66	0.60	0.50	0.50	3.40	3.37	2.40	2.40	2.24	2.01	1.20	1.20	0.00	0.00	-0.81	-40.15
<b>Egypt</b>	0.16	0.16	0.16	0.16	5.63	5.63	5.63	5.63	0.90	0.90	0.90	0.90	0.00	0.00	0.00	0.00
<b>European Union - 28</b>	0.11	0.11	0.12	0.12	6.10	4.34	4.81	4.81	0.67	0.49	0.60	0.60	0.00	0.00	0.11	22.84
France	0.04	0.04	0.05	0.05	6.53	5.69	5.20	5.20	0.28	0.24	0.26	0.26	0.00	0.00	0.02	8.79
Italy	0.04	0.04	0.04	0.04	7.14	4.27	6.22	6.22	0.30	0.16	0.23	0.23	0.00	0.00	0.07	45.57
<b>Others</b>	7.61	6.88	7.05	7.06	0.92	1.14	1.09	1.07	7.04	7.84	7.65	7.53	-0.13	-1.63	-0.31	-3.94

**Table 09 Rice Area, Yield, and Production**  
**World and Selected Countries and Regions**

Country / Region	Area (Million hectares)				Yield (Metric tons per hectare)				Production (Million metric tons)				Change in Production			
	Prel.		2013/14 Proj.		Prel.		2013/14 Proj.		Prel.		2013/14 Proj.		From last month		From last year	
	2011/12	2012/13	Mar	Apr	2011/12	2012/13	Mar	Apr	2011/12	2012/13	Mar	Apr	MMT	Percent	MMT	Percent
<b>World</b>	160.23	157.92	160.61	160.76	4.34	4.45	4.41	4.41	466.92	471.27	474.76	475.57	0.82	0.17	4.31	0.91
<b>United States</b>	1.06	1.08	1.00	1.00	7.92	8.35	8.62	8.62	5.87	6.34	6.12	6.12	0.00	0.00	-0.22	-3.49
<b>Total Foreign</b>	159.17	156.84	159.61	159.76	4.32	4.42	4.38	4.38	461.05	464.93	468.64	469.46	0.82	0.17	4.53	0.97
<b>East Asia</b>																
China	30.06	30.14	30.43	30.43	6.69	6.78	6.68	6.68	140.70	143.00	142.30	142.30	0.00	0.00	-0.70	-0.49
Japan	1.58	1.58	1.60	1.60	6.66	6.74	6.73	6.73	7.65	7.76	7.83	7.83	0.00	0.00	0.08	0.98
Korea, South	0.85	0.85	0.83	0.83	6.58	6.37	6.76	6.76	4.22	4.01	4.23	4.23	0.00	0.00	0.22	5.59
Korea, North	0.57	0.57	0.57	0.57	4.32	4.74	4.90	4.90	1.60	1.74	1.80	1.80	0.00	0.00	0.06	3.45
<b>South Asia</b>																
India	44.10	42.41	43.50	43.50	3.58	3.72	3.62	3.62	105.31	105.24	105.00	105.00	0.00	0.00	-0.24	-0.23
Bangladesh	11.72	11.65	11.77	11.77	4.31	4.35	4.41	4.41	33.70	33.82	34.59	34.59	0.00	0.00	0.77	2.28
Pakistan	2.75	2.40	2.70	2.76	3.38	3.63	3.56	3.59	6.20	5.80	6.40	6.60	0.20	3.13	0.80	13.79
<b>Southeast Asia</b>																
Indonesia	12.16	12.19	12.05	12.05	4.73	4.72	4.88	4.88	36.50	36.55	37.36	37.36	0.00	0.00	0.81	2.20
Vietnam	7.74	7.86	7.80	7.81	5.61	5.60	5.68	5.70	27.15	27.52	27.70	27.80	0.10	0.36	0.28	1.02
Thailand	11.00	10.84	10.90	10.90	2.82	2.82	2.85	2.85	20.46	20.20	20.50	20.50	0.00	0.00	0.30	1.49
Burma	7.03	7.04	7.05	7.05	2.55	2.60	2.65	2.65	11.47	11.72	11.96	11.96	0.00	0.00	0.24	2.07
Philippines	4.58	4.70	4.67	4.67	3.71	3.86	3.96	3.96	10.71	11.43	11.64	11.64	0.00	0.00	0.21	1.86
Cambodia	2.77	2.95	3.05	3.05	2.41	2.44	2.51	2.51	4.27	4.60	4.90	4.90	0.00	0.00	0.30	6.52
Laos	0.82	0.86	0.87	0.87	2.71	2.72	2.74	2.74	1.40	1.48	1.50	1.50	0.00	0.00	0.03	1.69
Malaysia	0.68	0.69	0.69	0.69	3.85	3.79	3.91	3.91	1.69	1.69	1.76	1.76	0.00	0.00	0.06	3.60
<b>South America</b>																
Brazil	2.43	2.39	2.42	2.48	4.78	4.92	5.04	5.11	7.89	7.99	8.30	8.60	0.30	3.61	0.61	7.63
Peru	0.36	0.39	0.41	0.41	7.39	7.72	7.72	7.72	1.84	2.10	2.16	2.16	0.00	0.00	0.06	2.67
<b>Sub-Saharan Africa</b>																
Nigeria	2.58	2.00	2.50	2.50	1.77	1.88	1.76	1.76	2.88	2.37	2.77	2.77	0.00	0.00	0.40	16.96
Madagascar	1.46	1.35	1.34	1.45	2.94	3.37	2.68	2.49	2.75	2.91	2.30	2.31	0.01	0.48	-0.60	-20.67
<b>European Union - 28</b>	0.48	0.45	0.45	0.44	6.33	6.67	6.60	6.44	2.11	2.10	2.08	1.94	-0.14	-6.49	-0.15	-7.34
Italy	0.25	0.24	0.24	0.22	6.11	6.66	6.67	6.36	1.06	1.10	1.10	0.96	-0.14	-12.31	-0.13	-12.23
Spain	0.12	0.11	0.11	0.11	7.55	7.73	7.49	7.49	0.65	0.62	0.59	0.59	0.00	0.00	-0.03	-4.05
<b>Egypt</b>	0.70	0.77	0.80	0.80	8.80	8.80	8.79	8.79	4.25	4.68	4.85	4.85	0.00	0.00	0.18	3.74
<b>Iran</b>	0.56	0.56	0.59	0.59	4.19	4.19	4.24	4.24	1.55	1.55	1.65	1.65	0.00	0.00	0.10	6.45
<b>Others</b>	12.20	12.20	12.63	12.56	3.06	3.05	3.00	3.06	24.76	24.69	25.08	25.42	0.34	1.35	0.73	2.94

Yield is on a rough basis, before the milling process  
Production is on a milled basis, after the milling process

4/9/2014 9:50:03 AM

**Table 10 Total Oilseed Area, Yield, and Production**  
**World and Selected Countries and Regions**

Country / Region	Area (Million hectares)				Yield (Metric tons per hectare)				Production (Million metric tons)				Change in Production			
	2011/12	Prel. 2012/13	2013/14 Proj. Feb	Mar	2011/12	Prel. 2012/13	2013/14 Proj. Feb	Mar	2011/12	Prel. 2012/13	2013/14 Proj. Feb	Mar	From last month MMT	Percent	From last year MMT	Percent
<b>World Total</b>	--	--	--	--	--	--	--	--	447.10	473.72	505.96	504.30	-1.66	-0.33	30.58	6.46
<b>Total Foreign</b>	--	--	--	--	--	--	--	--	354.75	380.57	408.64	406.98	-1.66	-0.41	26.41	6.94
<b>Oilseed, Copra</b>	--	--	--	--	--	--	--	--	5.56	5.80	5.82	5.68	-0.14	-2.41	-0.12	-2.14
<b>Oilseed, Palm Kernel</b>	--	--	--	--	--	--	--	--	13.79	14.85	15.48	15.48	0.00	0.00	0.63	4.26
<b>Major OilSeeds</b>	221.38	227.12	229.02	229.33	1.93	1.99	2.12	2.11	427.74	453.07	484.66	483.14	-1.52	-0.31	30.08	6.64
<b>United States</b>	35.14	36.71	35.34	35.34	2.63	2.54	2.75	2.75	92.35	93.15	97.32	97.32	0.00	0.00	4.18	4.49
<b>Foreign Oilseeds</b>	186.24	190.41	193.69	193.99	1.80	1.89	2.00	1.99	335.40	359.92	387.34	385.82	-1.52	-0.39	25.90	7.20
<b>South America</b>	52.48	56.23	59.20	59.00	2.37	2.72	2.81	2.77	124.57	152.90	166.30	163.60	-2.70	-1.62	10.70	7.00
Brazil	26.57	28.77	30.77	30.77	2.63	2.93	3.02	2.97	69.93	84.41	92.90	91.40	-1.50	-1.61	6.99	8.28
Argentina	20.24	21.71	22.34	22.34	2.21	2.47	2.58	2.58	44.78	53.63	57.74	57.74	0.00	0.00	4.11	7.65
Paraguay	3.16	3.18	3.47	3.27	1.35	2.68	2.75	2.55	4.26	8.54	9.52	8.32	-1.20	-12.61	-0.22	-2.52
Bolivia	1.25	1.26	1.23	1.23	2.03	2.31	2.10	2.10	2.54	2.91	2.58	2.58	0.00	0.00	-0.33	-11.34
<b>China</b>	26.26	25.49	24.97	25.09	2.27	2.35	2.32	2.34	59.60	59.88	57.99	58.59	0.60	1.03	-1.29	-2.15
<b>South Asia</b>	39.42	39.64	41.05	41.05	1.06	1.05	1.04	1.04	41.69	41.51	42.65	42.65	0.00	0.00	1.14	2.75
India	35.11	35.35	36.85	36.85	1.02	1.02	1.01	1.01	35.63	36.10	37.27	37.27	0.00	0.00	1.17	3.24
Pakistan	3.98	3.96	3.87	3.87	1.46	1.30	1.32	1.32	5.79	5.15	5.12	5.12	0.00	0.00	-0.03	-0.58
<b>European Union - 28</b>	11.82	11.31	11.87	11.92	2.49	2.45	2.62	2.63	29.44	27.68	31.14	31.31	0.17	0.55	3.63	13.12
France	2.34	2.33	2.24	2.24	3.15	3.05	2.84	2.78	7.36	7.10	6.38	6.23	-0.15	-2.35	-0.88	-12.37
Germany	1.36	1.33	1.47	1.47	2.90	3.67	3.99	3.99	3.93	4.86	5.86	5.86	0.00	0.00	0.99	20.45
Poland	0.83	0.72	0.90	0.92	2.24	2.64	2.78	2.84	1.87	1.91	2.51	2.61	0.10	3.99	0.70	36.73
Romania	1.45	1.30	1.43	1.43	1.85	1.27	1.91	1.91	2.68	1.66	2.74	2.74	0.00	0.00	1.09	65.56
Hungary	0.85	0.81	0.84	0.84	2.32	2.18	2.39	2.39	1.98	1.77	2.02	2.02	0.00	0.00	0.25	14.26
United Kingdom	0.71	0.76	0.72	0.72	3.91	3.38	3.01	3.01	2.76	2.56	2.15	2.15	0.00	0.00	-0.41	-15.92
<b>Former Soviet Union -</b>	20.96	20.36	21.08	21.07	1.46	1.37	1.68	1.68	30.66	27.85	35.41	35.39	-0.02	-0.06	7.54	27.07
Russia	9.22	8.45	8.76	8.76	1.35	1.29	1.50	1.50	12.43	10.87	13.15	13.15	0.00	0.00	2.27	20.91
Ukraine	7.74	7.96	8.35	8.35	1.83	1.58	2.11	2.11	14.20	12.61	17.62	17.62	0.00	0.00	5.01	39.71
Uzbekistan	1.31	1.35	1.29	1.29	1.26	1.31	1.30	1.30	1.65	1.77	1.67	1.67	0.00	0.00	-0.10	-5.67
<b>Canada</b>	9.15	10.52	9.87	9.87	2.07	1.81	2.36	2.36	18.93	19.04	23.27	23.27	0.00	0.00	4.22	22.18
<b>Africa</b>	16.41	16.54	15.99	16.28	0.89	0.90	0.92	0.92	14.55	14.88	14.76	15.04	0.28	1.92	0.17	1.13
Nigeria	3.28	3.16	3.23	3.23	1.12	1.16	1.11	1.11	3.67	3.66	3.58	3.58	0.00	0.00	-0.08	-2.19
<b>Southeast Asia</b>	3.85	3.93	3.94	3.94	1.37	1.38	1.39	1.39	5.26	5.44	5.48	5.48	0.00	0.00	0.05	0.83
Indonesia	1.16	1.14	1.13	1.13	1.55	1.54	1.56	1.56	1.80	1.76	1.76	1.76	0.00	0.00	0.00	0.00
<b>Australia</b>	3.15	3.72	3.01	3.07	1.68	1.50	1.62	1.63	5.28	5.57	4.88	5.01	0.13	2.71	-0.56	-10.02
<b>Others</b>	2.74	2.67	2.71	2.70	1.98	1.95	2.02	2.03	5.43	5.19	5.47	5.49	0.02	0.29	0.29	5.64

World Total and Total Foreign: (Major Oilseeds plus copra and palm kernel)

Major Oilseeds: (soybeans, sunflowerseeds, peanuts(inshell), cottonseed and rapeseed)

**Table 11 Soybean Area, Yield, and Production**

Country / Region	Area (Million hectares)				Yield (Metric tons per hectare)				Production (Million metric tons)				Change in Production			
	Prel.		2013/14 Proj.		Prel.		2013/14 Proj.		Prel.		2013/14 Proj.		From last month		From last year	
	2011/12	2012/13	Mar	Apr	2011/12	2012/13	Mar	Apr	2011/12	2012/13	Mar	Apr	MMT	Percent	MMT	Percent
<b>World</b>	103.18	109.22	112.57	113.27	2.32	2.45	2.54	2.51	239.57	268.10	285.43	284.05	-1.39	-0.49	15.94	5.95
<b>United States</b>	29.86	30.82	30.70	30.70	2.82	2.68	2.92	2.92	84.19	82.56	89.51	89.51	0.00	0.00	6.95	8.41
<b>Total Foreign</b>	73.32	78.40	81.86	82.57	2.12	2.37	2.39	2.36	155.38	185.54	195.93	194.54	-1.39	-0.71	9.00	4.85
<b>South America</b>																
Brazil	25.00	27.70	29.50	29.90	2.66	2.96	3.00	2.93	66.50	82.00	88.50	87.50	-1.00	-1.13	5.50	6.71
Argentina	17.58	19.40	20.00	20.00	2.28	2.54	2.70	2.70	40.10	49.30	54.00	54.00	0.00	0.00	4.70	9.53
Paraguay	2.96	3.00	3.10	3.10	1.37	2.77	2.61	2.61	4.04	8.30	8.10	8.10	0.00	0.00	-0.20	-2.41
Bolivia	1.09	1.09	1.05	1.05	2.13	2.44	2.20	2.20	2.32	2.66	2.31	2.31	0.00	0.00	-0.35	-13.16
Uruguay	1.10	1.30	1.20	1.45	2.48	2.81	2.60	2.41	2.73	3.65	3.12	3.50	0.38	12.18	-0.15	-4.11
<b>East Asia</b>																
China	7.89	7.17	6.85	6.85	1.84	1.82	1.78	1.78	14.49	13.05	12.20	12.20	0.00	0.00	-0.85	-6.51
Korea, South	0.08	0.08	0.08	0.08	1.65	1.52	1.93	1.93	0.13	0.12	0.15	0.15	0.00	0.00	0.03	25.20
Korea, North	0.13	0.12	0.12	0.12	1.35	1.25	1.17	1.17	0.18	0.15	0.14	0.14	0.00	0.00	-0.01	-6.67
Japan	0.14	0.13	0.13	0.13	1.60	1.80	1.62	1.56	0.22	0.24	0.21	0.20	-0.01	-5.71	-0.04	-16.10
<b>India</b>	10.27	10.80	12.20	12.20	1.07	1.06	0.97	0.90	11.00	11.50	11.80	11.00	-0.80	-6.78	-0.50	-4.35
<b>Canada</b>	1.55	1.68	1.82	1.82	2.77	3.03	2.86	2.86	4.30	5.09	5.20	5.20	0.00	0.00	0.11	2.24
<b>Former Soviet Union -</b>																
Ukraine	1.11	1.41	1.35	1.35	2.04	1.70	2.05	2.05	2.26	2.41	2.76	2.76	0.00	0.00	0.36	14.89
Russia	1.18	1.35	1.12	1.20	1.48	1.39	1.38	1.36	1.75	1.88	1.54	1.64	0.09	6.10	-0.24	-12.98
<b>Southeast Asia</b>																
Indonesia	0.45	0.45	0.45	0.45	1.38	1.33	1.38	1.38	0.62	0.60	0.62	0.62	0.00	0.00	0.02	3.33
Vietnam	0.12	0.18	0.20	0.20	1.45	1.50	1.50	1.50	0.18	0.27	0.30	0.30	0.00	0.00	0.03	11.11
Thailand	0.07	0.05	0.06	0.04	1.68	1.70	1.55	1.67	0.11	0.09	0.09	0.07	-0.02	-22.22	-0.02	-17.65
Burma	0.18	0.18	0.18	0.18	1.42	1.44	1.44	1.44	0.26	0.26	0.26	0.26	0.00	0.00	0.00	0.00
<b>European Union - 28</b>	0.45	0.43	0.46	0.46	2.74	2.34	2.71	2.71	1.22	1.00	1.25	1.25	0.00	0.00	0.25	24.75
Italy	0.17	0.15	0.18	0.18	3.40	2.76	3.53	3.53	0.57	0.42	0.62	0.62	0.00	0.00	0.20	47.16
France	0.04	0.04	0.04	0.04	2.95	2.81	2.75	2.75	0.12	0.10	0.11	0.11	0.00	0.00	0.01	5.77
<b>Sub-Saharan Africa</b>																
South Africa	0.47	0.50	0.58	0.58	1.38	1.70	1.71	1.71	0.65	0.85	0.99	0.99	0.00	0.00	0.14	16.47
Nigeria	0.61	0.44	0.44	0.44	0.93	1.02	1.02	1.02	0.56	0.45	0.45	0.45	0.00	0.00	0.00	0.00
Uganda	0.15	0.15	0.15	0.15	1.42	1.00	1.11	1.11	0.21	0.15	0.17	0.17	0.00	0.00	0.01	8.50
<b>Serbia</b>	0.17	0.17	0.17	0.17	2.52	1.70	2.42	2.42	0.42	0.28	0.40	0.40	0.00	0.00	0.12	42.86
<b>Mexico</b>	0.17	0.14	0.17	0.17	1.24	1.74	1.70	1.70	0.21	0.25	0.28	0.28	0.00	0.00	0.03	12.00
<b>Iran</b>	0.08	0.08	0.08	0.08	2.44	2.44	2.44	2.44	0.20	0.20	0.20	0.20	0.00	0.00	0.00	0.00
<b>Others</b>	0.35	0.39	0.42	0.40	2.16	2.07	2.14	2.14	0.75	0.81	0.89	0.86	-0.03	-3.26	0.05	6.17

**Table 12 Cottonseed Area, Yield, and Production**

Country / Region	Area (Million hectares)				Yield (Metric tons per hectare)				Production (Million metric tons)				Change in Production			
	Prel.		2013/14 Proj.		Prel.		2013/14 Proj.		Prel.		2013/14 Proj.		From last month		From last year	
	2011/12	2012/13	Mar	Apr	2011/12	2012/13	Mar	Apr	2011/12	2012/13	Mar	Apr	MMT	Percent	MMT	Percent
<b>World</b>	34.74	33.45	32.21	32.05	1.38	1.38	1.37	1.39	48.00	46.31	44.07	44.43	0.36	0.81	-1.88	-4.07
<b>United States</b>	3.83	3.79	3.10	3.10	1.27	1.36	1.29	1.29	4.87	5.14	4.00	4.00	0.00	0.00	-1.14	-22.24
<b>Total Foreign</b>	30.91	29.65	29.11	28.95	1.40	1.39	1.38	1.40	43.12	41.17	40.08	40.43	0.36	0.89	-0.74	-1.80
<b>China</b>	5.50	5.30	5.05	4.90	2.42	2.59	2.48	2.56	13.33	13.72	12.54	12.54	0.00	0.00	-1.18	-8.60
<b>South Asia</b>																
India	12.20	12.00	11.70	11.70	1.01	1.01	1.05	1.05	12.31	12.10	12.30	12.30	0.00	0.00	0.20	1.65
Pakistan	3.00	3.00	3.00	3.00	1.54	1.33	1.37	1.37	4.62	4.00	4.10	4.10	0.00	0.00	0.10	2.50
<b>Former Soviet Union -</b>																
Uzbekistan	1.31	1.35	1.29	1.29	1.26	1.31	1.30	1.30	1.65	1.77	1.67	1.67	0.00	0.00	-0.10	-5.67
Turkmenistan	0.58	0.60	0.58	0.58	0.96	1.04	1.03	1.03	0.55	0.63	0.59	0.59	0.00	0.00	-0.04	-5.60
Tajikistan	0.20	0.20	0.19	0.19	1.10	1.08	1.03	1.03	0.23	0.22	0.20	0.20	0.00	0.00	-0.02	-9.30
Kazakhstan	0.16	0.15	0.14	0.14	1.06	1.10	1.06	1.06	0.17	0.16	0.15	0.15	0.00	0.00	-0.02	-10.43
<b>South America</b>																
Brazil	1.40	0.90	1.10	1.10	2.31	2.48	2.27	2.54	3.24	2.23	2.50	2.79	0.29	11.60	0.56	25.11
Argentina	0.53	0.36	0.58	0.57	0.67	0.72	0.75	0.75	0.36	0.26	0.44	0.43	-0.01	-1.61	0.17	64.62
<b>Middle East</b>																
Turkey	0.49	0.41	0.33	0.33	2.14	2.12	2.24	2.24	1.05	0.87	0.74	0.74	0.00	0.00	-0.13	-14.94
Syria	0.15	0.13	0.11	0.11	2.73	2.72	2.51	2.51	0.41	0.34	0.28	0.28	0.00	0.00	-0.06	-18.82
Iran	0.12	0.11	0.11	0.11	1.17	1.14	1.14	1.14	0.14	0.12	0.12	0.12	0.00	0.00	0.00	0.00
<b>Australia</b>	0.66	0.45	0.42	0.45	2.60	3.20	3.13	2.92	1.70	1.42	1.30	1.30	0.00	0.00	-0.12	-8.58
<b>European Union - 28</b>	0.35	0.36	0.32	0.32	1.50	1.31	1.62	1.62	0.53	0.47	0.51	0.51	0.00	0.00	0.04	9.19
Greece	0.29	0.29	0.25	0.25	1.58	1.33	1.75	1.75	0.45	0.38	0.44	0.44	0.00	0.00	0.06	15.00
Spain	0.07	0.07	0.06	0.06	1.19	1.24	1.14	1.14	0.08	0.09	0.07	0.07	0.00	0.00	-0.01	-16.09
<b>Sub-Saharan Africa</b>																
Burkina	0.40	0.58	0.58	0.58	0.56	0.56	0.54	0.59	0.22	0.33	0.31	0.34	0.03	8.68	0.01	4.00
Mali	0.48	0.52	0.53	0.53	0.51	0.48	0.50	0.50	0.24	0.25	0.27	0.27	0.00	0.00	0.02	6.83
Cameroon	0.18	0.21	0.22	0.22	0.93	1.10	1.14	1.14	0.16	0.23	0.25	0.25	0.00	0.00	0.02	8.70
Sudan	0.10	0.06	0.05	0.05	1.03	1.07	1.02	1.02	0.10	0.06	0.05	0.05	0.00	0.00	-0.02	-28.13
Zimbabwe	0.47	0.24	0.30	0.21	0.49	0.41	0.51	0.63	0.23	0.10	0.15	0.13	-0.02	-13.16	0.03	33.33
Nigeria	0.33	0.30	0.29	0.29	0.43	0.47	0.45	0.45	0.14	0.14	0.13	0.13	0.00	0.00	-0.01	-7.14
Benin	0.20	0.25	0.27	0.27	0.58	0.73	0.55	0.55	0.12	0.18	0.15	0.15	0.00	0.00	-0.03	-18.13
Uganda	0.10	0.08	0.05	0.05	1.49	1.16	1.54	1.54	0.15	0.09	0.08	0.08	0.00	0.00	-0.01	-8.05
<b>Egypt</b>	0.22	0.14	0.13	0.13	1.03	1.04	1.05	1.05	0.23	0.15	0.14	0.14	0.00	0.00	-0.01	-8.05
<b>Mexico</b>	0.19	0.16	0.12	0.12	2.09	2.36	2.27	2.54	0.40	0.37	0.27	0.30	0.03	12.69	-0.07	-18.38
<b>Burma</b>	0.30	0.30	0.30	0.30	0.63	0.63	0.63	0.63	0.19	0.19	0.19	0.19	0.00	0.00	0.00	0.00
<b>Others</b>	1.31	1.52	1.39	1.44	0.52	0.52	0.49	0.49	0.68	0.79	0.68	0.71	0.03	4.56	-0.08	-10.00

**Table 13 Peanuts Area, Yield, and Production**

Country / Region	Area (Million hectares)				Yield (Metric tons per hectare)				Production (Million metric tons)				Change in Production			
	Prel.		2013/14 Proj.		Prel.		2013/14 Proj.		Prel.		2013/14 Proj.		From last month		From last year	
	2011/12	2012/13	Mar	Apr	2011/12	2012/13	Mar	Apr	2011/12	2012/13	Mar	Apr	MMT	Percent	MMT	Percent
<b>World</b>	23.83	23.88	23.83	23.85	1.61	1.68	1.67	1.68	38.28	40.16	39.83	40.15	0.31	0.79	-0.01	-0.02
<b>United States</b>	0.44	0.65	0.42	0.42	3.80	4.73	4.49	4.49	1.66	3.07	1.89	1.89	0.00	0.00	-1.18	-38.30
<b>Total Foreign</b>	23.40	23.23	23.41	23.43	1.57	1.60	1.62	1.63	36.62	37.09	37.94	38.26	0.31	0.83	1.17	3.14
<b>China</b>	4.58	4.64	4.71	4.71	3.50	3.60	3.61	3.61	16.05	16.69	17.00	17.00	0.00	0.00	0.31	1.85
<b>South Asia</b>																
India	5.30	5.00	5.40	5.40	1.04	1.00	1.02	1.05	5.50	5.00	5.50	5.65	0.15	2.73	0.65	13.00
Pakistan	0.11	0.11	0.11	0.11	0.90	0.90	0.90	0.90	0.10	0.10	0.10	0.10	0.00	0.00	0.00	0.00
<b>Sub-Saharan Africa</b>	10.88	10.86	10.62	10.62	0.91	0.93	0.95	0.95	9.91	10.05	10.11	10.11	0.00	0.00	0.07	0.65
Nigeria	2.34	2.42	2.50	2.50	1.26	1.27	1.20	1.20	2.96	3.07	3.00	3.00	0.00	0.00	-0.07	-2.28
Senegal	0.87	0.71	1.00	1.00	0.61	0.95	1.00	1.00	0.53	0.67	1.00	1.00	0.00	0.00	0.33	48.59
Chad	0.48	0.41	0.50	0.50	0.86	0.90	0.80	0.80	0.41	0.37	0.40	0.40	0.00	0.00	0.03	7.82
Ghana	0.36	0.35	0.40	0.40	1.30	1.38	1.10	1.10	0.47	0.48	0.44	0.44	0.00	0.00	-0.04	-7.37
Sudan	1.70	1.62	1.00	1.00	0.70	0.64	0.85	0.85	1.19	1.03	0.85	0.85	0.00	0.00	-0.18	-17.64
Congo (Kinshasa)	0.47	0.48	0.48	0.48	0.78	0.78	0.78	0.78	0.37	0.37	0.37	0.37	0.00	0.00	0.00	-0.27
Burkina	0.39	0.36	0.35	0.35	0.68	0.73	0.77	0.77	0.27	0.26	0.27	0.27	0.00	0.00	0.00	0.38
Guinea	0.22	0.22	0.21	0.21	1.35	1.38	1.24	1.24	0.29	0.30	0.26	0.26	0.00	0.00	-0.04	-13.33
Cameroon	0.40	0.41	0.40	0.40	1.40	1.39	1.38	1.38	0.56	0.57	0.55	0.55	0.00	0.00	-0.02	-3.51
Mali	0.34	0.34	0.35	0.35	0.93	0.95	0.93	0.93	0.32	0.33	0.33	0.33	0.00	0.00	0.00	-0.91
Malawi	0.29	0.28	0.28	0.28	1.04	0.96	0.96	0.96	0.31	0.27	0.27	0.27	0.00	0.00	0.00	0.00
Cote d'Ivoire	0.08	0.08	0.08	0.08	1.15	1.21	1.13	1.13	0.09	0.09	0.09	0.09	0.00	0.00	0.00	-3.23
Uganda	0.33	0.30	0.30	0.30	1.00	1.00	1.00	1.00	0.33	0.30	0.30	0.30	0.00	0.00	0.01	1.69
Central African Republic	0.10	0.10	0.10	0.10	1.62	1.55	1.50	1.50	0.16	0.15	0.15	0.15	0.00	0.00	0.00	0.67
Benin	0.12	0.13	0.13	0.13	0.66	0.65	0.65	0.65	0.08	0.08	0.09	0.09	0.00	0.00	0.00	1.19
Mozambique	0.29	0.39	0.29	0.29	0.33	0.29	0.38	0.38	0.10	0.11	0.11	0.11	0.00	0.00	0.00	-2.65
Niger	0.69	0.72	0.70	0.70	0.57	0.52	0.57	0.57	0.40	0.37	0.40	0.40	0.00	0.00	0.03	7.82
South Africa	0.05	0.05	0.05	0.05	1.73	1.55	2.00	2.00	0.08	0.07	0.10	0.10	0.00	0.00	0.03	36.99
<b>Southeast Asia</b>																
Indonesia	0.70	0.68	0.67	0.66	1.66	1.68	1.69	1.77	1.17	1.15	1.13	1.16	0.04	3.11	0.02	1.31
Burma	0.88	0.90	0.90	0.90	1.58	1.61	1.61	1.61	1.39	1.45	1.45	1.45	0.00	0.00	0.00	0.00
Vietnam	0.22	0.24	0.25	0.25	2.13	2.17	2.20	2.20	0.47	0.52	0.55	0.55	0.00	0.00	0.03	5.77
Thailand	0.03	0.03	0.03	0.03	1.60	1.67	1.67	1.67	0.05	0.05	0.05	0.05	0.00	0.00	0.00	0.00
<b>South America</b>																
Argentina	0.31	0.38	0.32	0.34	3.19	2.63	3.13	3.13	0.98	1.00	1.00	1.05	0.05	5.00	0.05	5.00
Brazil	0.09	0.10	0.10	0.11	3.14	3.36	3.00	3.37	0.30	0.33	0.30	0.36	0.06	21.33	0.04	11.66
<b>Egypt</b>	0.06	0.06	0.06	0.06	3.17	3.17	3.17	3.17	0.19	0.19	0.19	0.19	0.00	0.00	0.00	0.00
<b>Mexico</b>	0.06	0.06	0.07	0.07	1.25	1.98	1.64	1.64	0.08	0.12	0.12	0.12	0.00	0.00	0.00	0.00
<b>Others</b>	0.18	0.18	0.18	0.19	2.51	2.59	2.50	2.52	0.44	0.46	0.45	0.47	0.02	3.31	0.01	2.18

**Table 14 Sunflower Area, Yield, and Production**

Country / Region	Area (Million hectares)				Yield (Metric tons per hectare)				Production (Million metric tons)				Change in Production			
	Prel.		2013/14 Proj.		Prel.		2013/14 Proj.		Prel.		2013/14 Proj.		From last month		From last year	
	2011/12	2012/13	Mar	Apr	2011/12	2012/13	Mar	Apr	2011/12	2012/13	Mar	Apr	MMT	Percent	MMT	Percent
<b>World</b>	25.56	24.65	24.97	25.23	1.59	1.48	1.74	1.74	40.64	36.41	43.33	43.78	0.45	1.03	7.37	20.23
<b>United States</b>	0.59	0.75	0.60	0.60	1.57	1.70	1.54	1.54	0.93	1.26	0.92	0.92	0.00	0.00	-0.34	-27.06
<b>Total Foreign</b>	24.97	23.90	24.37	24.63	1.59	1.47	1.74	1.74	39.72	35.15	42.41	42.86	0.45	1.05	7.71	21.93
<b>Former Soviet Union -</b>																
Russia	7.20	6.13	6.54	6.80	1.34	1.30	1.56	1.55	9.63	7.96	10.20	10.55	0.35	3.43	2.60	32.60
Ukraine	5.80	6.00	6.00	6.00	1.81	1.50	2.08	2.08	10.50	9.00	12.50	12.50	0.00	0.00	3.50	38.89
Moldova	0.28	0.30	0.25	0.25	1.54	1.00	1.80	1.80	0.43	0.30	0.45	0.45	0.00	0.00	0.15	52.03
Kazakhstan	0.95	0.68	0.82	0.82	0.43	0.59	0.70	0.70	0.41	0.40	0.57	0.57	0.00	0.00	0.17	43.25
<b>South America</b>																
Argentina	1.82	1.62	1.44	1.40	1.83	1.91	1.60	1.64	3.34	3.10	2.30	2.30	0.00	0.00	-0.80	-25.81
Uruguay	0.01	0.03	0.03	0.03	1.50	1.60	1.40	1.40	0.02	0.04	0.04	0.04	0.00	0.00	-0.01	-12.50
Bolivia	0.16	0.17	0.18	0.18	1.38	1.47	1.50	1.50	0.22	0.25	0.27	0.27	0.00	0.00	0.02	8.00
<b>China</b>	0.94	0.95	0.97	0.97	2.46	2.54	2.54	2.54	2.32	2.41	2.45	2.45	0.00	0.00	0.04	1.83
<b>European Union - 28</b>	4.27	4.29	4.40	4.40	1.98	1.63	1.98	1.98	8.46	7.00	8.70	8.70	0.00	0.00	1.70	24.30
France	0.74	0.68	0.75	0.75	2.55	2.32	2.27	2.27	1.89	1.59	1.70	1.70	0.00	0.00	0.12	7.26
Hungary	0.58	0.61	0.61	0.61	2.37	2.14	2.37	2.37	1.38	1.30	1.44	1.44	0.00	0.00	0.13	10.22
Spain	0.86	0.76	0.85	0.85	1.26	0.81	1.21	1.21	1.08	0.62	1.03	1.03	0.00	0.00	0.41	65.59
Italy	0.12	0.11	0.12	0.12	2.32	2.03	2.02	2.02	0.27	0.23	0.25	0.25	0.00	0.00	0.02	10.22
Slovakia	0.09	0.09	0.09	0.09	2.26	2.22	2.35	2.35	0.20	0.20	0.20	0.20	0.00	0.00	0.00	1.01
<b>South Asia</b>																
India	0.74	0.80	0.75	0.75	0.84	0.88	0.89	0.89	0.62	0.70	0.67	0.67	0.00	0.00	-0.03	-4.29
Pakistan	0.50	0.47	0.40	0.40	1.50	1.49	1.50	1.50	0.75	0.70	0.60	0.60	0.00	0.00	-0.10	-14.29
<b>Turkey</b>	0.49	0.60	0.70	0.69	1.89	1.88	2.00	2.03	0.93	1.13	1.40	1.40	0.00	0.00	0.28	24.44
<b>South Africa</b>	0.45	0.50	0.51	0.51	1.15	1.11	1.20	1.20	0.52	0.56	0.61	0.61	0.00	0.00	0.06	9.91
<b>Burma</b>	0.86	0.87	0.87	0.87	0.92	0.92	0.92	0.92	0.79	0.80	0.80	0.80	0.00	0.00	0.00	0.00
<b>Serbia</b>	0.18	0.18	0.19	0.19	2.37	2.00	2.30	2.30	0.42	0.35	0.43	0.43	0.00	0.00	0.08	21.43
<b>Canada</b>	0.01	0.04	0.04	0.04	1.43	2.18	1.71	1.71	0.02	0.09	0.07	0.07	0.00	0.00	-0.02	-25.29
<b>Australia</b>	0.04	0.03	0.03	0.03	1.18	1.47	1.19	1.19	0.05	0.04	0.03	0.03	0.00	0.00	-0.01	-27.27
<b>Others</b>	0.26	0.26	0.27	0.33	1.22	1.30	1.23	1.29	0.32	0.34	0.33	0.42	0.10	29.05	0.09	25.22



**Table 15 Rapeseed Area, Yield, and Production**

Country / Region	Area (Million hectares)				Yield (Metric tons per hectare)				Production (Million metric tons)				Change in Production			
	Prel.		2013/14 Proj.		Prel.		2013/14 Proj.		Prel.		2013/14 Proj.		From last month		From last year	
	2011/12	2012/13	Mar	Apr	2011/12	2012/13	Mar	Apr	2011/12	2012/13	Mar	Apr	MMT	Percent	MMT	Percent
<b>World</b>	34.14	36.13	35.75	36.16	1.80	1.74	1.97	1.96	61.48	63.02	70.47	71.01	0.54	0.77	7.99	12.68
<b>United States</b>	0.42	0.70	0.51	0.51	1.65	1.59	1.96	1.96	0.70	1.11	1.00	1.00	0.00	0.00	-0.11	-9.71
<b>Total Foreign</b>	33.71	35.43	35.24	35.65	1.80	1.75	1.97	1.96	60.79	61.91	69.47	70.01	0.54	0.78	8.10	13.08
<b>European Union - 28</b>	6.75	6.24	6.74	6.80	2.85	3.08	3.09	3.10	19.24	19.21	20.85	21.10	0.25	1.20	1.89	9.84
Germany	1.33	1.30	1.44	1.46	2.91	3.70	4.03	3.95	3.87	4.81	5.80	5.78	-0.02	-0.38	0.97	20.22
France	1.56	1.61	1.45	1.44	3.44	3.37	3.04	3.03	5.35	5.42	4.42	4.35	-0.07	-1.59	-1.07	-19.76
United Kingdom	0.71	0.76	0.72	0.72	3.91	3.38	3.01	2.97	2.76	2.56	2.15	2.13	-0.02	-1.07	-0.43	-16.82
Poland	0.83	0.72	0.92	0.96	2.24	2.64	2.84	2.84	1.86	1.90	2.60	2.73	0.13	4.92	0.83	43.58
Czech Republic	0.37	0.40	0.42	0.42	2.80	2.77	3.44	3.45	1.05	1.11	1.44	1.44	0.00	-0.07	0.33	30.12
Denmark	0.15	0.13	0.18	0.18	3.36	3.71	3.87	3.87	0.51	0.48	0.69	0.69	0.00	0.00	0.21	43.01
Hungary	0.23	0.17	0.20	0.20	2.25	2.40	2.54	2.59	0.53	0.40	0.50	0.52	0.02	4.80	0.12	30.67
Romania	0.38	0.11	0.29	0.29	1.96	1.53	2.07	2.45	0.75	0.17	0.60	0.71	0.11	18.33	0.55	330.30
Slovakia	0.15	0.11	0.16	0.14	2.29	1.99	2.50	2.60	0.33	0.21	0.40	0.36	-0.04	-11.00	0.14	67.14
Sweden	0.10	0.11	0.11	0.12	2.67	3.00	2.95	2.73	0.27	0.32	0.31	0.33	0.02	7.42	0.01	3.74
Lithuania	0.25	0.26	0.27	0.27	1.94	2.42	2.17	2.33	0.48	0.63	0.58	0.62	0.04	7.30	-0.01	-2.06
Latvia	0.12	0.12	0.12	0.13	1.81	2.32	2.29	2.32	0.22	0.27	0.28	0.30	0.02	8.00	0.02	8.39
Austria	0.06	0.06	0.06	0.06	3.20	2.64	3.10	3.10	0.18	0.15	0.18	0.18	0.00	0.00	0.03	21.62
Finland	0.09	0.06	0.06	0.05	1.30	1.25	1.33	1.60	0.12	0.08	0.08	0.09	0.01	6.25	0.01	13.33
Estonia	0.09	0.09	0.09	0.09	1.62	1.90	1.76	2.02	0.14	0.16	0.15	0.17	0.02	16.00	0.01	6.75
<b>China</b>	7.35	7.43	7.51	7.51	1.83	1.88	1.92	1.92	13.43	14.01	14.40	14.40	0.00	0.00	0.39	2.81
<b>South Asia</b>																
India	6.60	6.75	6.80	7.13	0.94	1.01	1.03	1.02	6.20	6.80	7.00	7.30	0.30	4.29	0.50	7.35
Pakistan	0.37	0.38	0.36	0.36	0.89	0.92	0.89	0.89	0.33	0.35	0.32	0.32	0.00	0.00	-0.03	-8.57
Bangladesh	0.31	0.31	0.31	0.31	0.74	0.74	0.74	0.74	0.23	0.23	0.23	0.23	0.00	0.00	0.00	0.00
<b>Canada</b>	7.59	8.80	8.01	8.01	1.92	1.58	2.25	2.25	14.61	13.87	18.00	18.00	0.00	0.00	4.13	29.79
<b>Australia</b>	2.46	3.20	2.57	2.57	1.39	1.25	1.38	1.38	3.43	4.01	3.55	3.55	0.00	0.00	-0.46	-11.47
<b>Former Soviet Union -</b>																
Ukraine	0.83	0.55	1.00	1.00	1.73	2.20	2.36	2.36	1.44	1.20	2.35	2.35	0.00	0.00	1.15	95.43
Russia	0.84	0.97	1.10	1.11	1.25	1.07	1.27	1.25	1.05	1.04	1.40	1.39	-0.01	-0.64	0.36	34.59
Belarus	0.30	0.42	0.40	0.40	1.28	1.67	1.75	1.75	0.38	0.71	0.70	0.70	0.00	0.00	-0.01	-0.71
<b>Paraguay</b>	0.08	0.08	0.09	0.09	1.28	1.37	1.41	1.41	0.10	0.11	0.12	0.12	0.00	0.00	0.01	7.14
<b>Others</b>	0.24	0.30	0.36	0.36	1.51	1.26	1.51	1.51	0.37	0.38	0.54	0.54	0.00	0.18	0.16	43.39

**Table 16 Copra, Palm Kernel, and Palm Oil Production**

Country / Region	Production (Million metric tons)				Change in Production			
	2011/12	Prel. 2012/13	2013/14 Proj.		From last month		From last year	
			Mar	Apr	MMT	Percent	MMT	Percent
<b>Oilseed, Copra</b>								
Philippines	2.43	2.65	2.50	2.50	0.00	0.00	-0.14	-5.30
Indonesia	1.48	1.56	1.58	1.58	0.00	0.00	0.02	1.28
India	0.68	0.67	0.67	0.67	0.00	0.00	0.00	0.00
Vietnam	0.24	0.24	0.24	0.24	0.00	0.00	0.00	0.00
Mexico	0.22	0.21	0.21	0.21	0.00	0.00	0.00	0.00
Papua New Guinea	0.15	0.13	0.13	0.13	0.00	0.00	0.01	8.33
Thailand	0.07	0.07	0.07	0.07	0.00	0.00	0.00	0.00
Sri Lanka	0.07	0.07	0.07	0.07	0.00	0.00	0.00	0.00
Solomon Islands	0.03	0.03	0.03	0.03	0.00	0.00	0.00	0.00
Cote d'Ivoire	0.03	0.03	0.03	0.03	0.00	0.00	0.00	0.00
World	5.56	5.80	5.68	5.68	0.00	0.00	-0.12	-2.07
<b>Oilseed, Palm Kernel</b>								
Indonesia	6.90	7.48	8.18	8.14	-0.04	-0.49	0.66	8.82
Malaysia	4.56	4.87	4.80	4.80	0.00	0.00	-0.07	-1.44
Nigeria	0.65	0.70	0.72	0.72	0.00	0.00	0.02	2.86
Thailand	0.38	0.40	0.42	0.42	0.00	0.00	0.02	5.00
Colombia	0.21	0.21	0.24	0.24	0.00	0.00	0.03	14.29
Papua New Guinea	0.14	0.13	0.13	0.13	0.00	0.00	0.00	0.00
Cameroon	0.11	0.11	0.11	0.11	0.00	0.00	0.00	0.00
Ecuador	0.10	0.11	0.11	0.11	0.00	0.00	0.00	0.00
Honduras	0.10	0.10	0.10	0.10	0.00	0.00	0.00	0.00
Brazil	0.09	0.10	0.10	0.10	0.00	0.00	0.00	0.00
World	13.77	14.76	15.48	15.44	-0.04	-0.26	0.68	4.61
<b>Oil, Palm</b>								
Indonesia	26.20	28.50	31.00	31.00	0.00	0.00	2.50	8.77
Malaysia	18.20	19.32	19.20	19.20	0.00	0.00	-0.12	-0.62
Thailand	1.89	2.00	2.10	2.10	0.00	0.00	0.10	5.00
Colombia	0.95	0.97	1.04	1.04	0.00	0.00	0.06	6.19
Nigeria	0.85	0.91	0.93	0.93	0.00	0.00	0.02	2.20
Papua New Guinea	0.58	0.61	0.63	0.63	0.00	0.00	0.02	3.28
Ecuador	0.47	0.54	0.57	0.57	0.00	0.00	0.02	3.70
Honduras	0.40	0.41	0.43	0.43	0.00	0.00	0.02	4.88
Cote d'Ivoire	0.40	0.39	0.40	0.40	0.00	0.00	0.01	2.56
Brazil	0.31	0.34	0.34	0.34	0.00	0.00	0.00	0.00
World	51.99	55.82	58.43	58.52	0.09	0.15	2.70	4.84

World and Selected Countries and Regions

**Table 17 Cotton Area, Yield, and Production**

Country / Region	Area (Million hectares)				Yield (Kilograms per hectare)				Production (Million 480 lb. bales)				Change in Production			
	2011/12	Prel. 2012/13	2013/14 Proj. Mar	2013/14 Proj. Apr	2011/12	Prel. 2012/13	2013/14 Proj. Mar	2013/14 Proj. Apr	2011/12	Prel. 2012/13	2013/14 Proj. Mar	2013/14 Proj. Apr	From last month MBales	Percent	From last year MBales	Percent
<b>World</b>	35.77	34.32	33.13	32.95	771	780	767	771	126.64	123.02	116.68	116.62	-0.06	-0.05	-6.40	-5.20
<b>United States</b>	3.83	3.79	3.10	3.10	886	994	926	903	15.57	17.32	13.19	12.87	-0.32	-2.43	-4.45	-25.69
<b>Total Foreign</b>	31.94	30.53	30.02	29.85	757	754	751	757	111.07	105.71	103.49	103.75	0.26	0.25	-1.95	-1.85
<b>China</b>	5.50	5.30	5.05	4.90	1,346	1,438	1,380	1,422	34.00	35.00	32.00	32.00	0.00	0.00	-3.00	-8.57
<b>South Asia</b>																
India	12.20	12.00	11.70	11.70	518	517	540	540	29.00	28.50	29.00	29.00	0.00	0.00	0.50	1.75
Pakistan	3.00	3.00	3.00	3.00	769	675	689	689	10.60	9.30	9.50	9.50	0.00	0.00	0.20	2.15
<b>Former Soviet Union -</b>																
Uzbekistan	1.31	1.32	1.29	1.29	698	745	720	720	4.20	4.50	4.25	4.25	0.00	0.00	-0.25	-5.56
Turkmenistan	0.58	0.60	0.58	0.58	530	581	568	568	1.40	1.60	1.50	1.50	0.00	0.00	-0.10	-6.25
Tajikistan	0.20	0.20	0.19	0.19	619	599	573	573	0.58	0.55	0.50	0.50	0.00	0.00	-0.05	-9.09
Kazakhstan	0.16	0.15	0.14	0.14	590	611	584	584	0.44	0.42	0.37	0.37	0.00	0.00	-0.05	-10.84
<b>Sub-Saharan Africa</b>																
Burkina	0.40	0.58	0.58	0.58	441	441	426	464	0.80	1.18	1.13	1.23	0.10	8.89	0.05	4.26
Mali	0.48	0.52	0.53	0.53	393	366	386	386	0.86	0.88	0.94	0.94	0.00	0.00	0.06	6.82
Zimbabwe	0.47	0.24	0.30	0.21	278	236	290	337	0.60	0.26	0.40	0.33	-0.08	-18.75	0.07	25.00
Benin	0.20	0.25	0.27	0.27	381	479	363	363	0.35	0.55	0.45	0.45	0.00	0.00	-0.10	-18.18
Cote d'Ivoire	0.28	0.38	0.40	0.40	385	404	354	354	0.50	0.70	0.65	0.65	0.00	0.00	-0.05	-6.47
Cameroon	0.18	0.21	0.22	0.22	404	477	495	495	0.33	0.46	0.50	0.50	0.00	0.00	0.04	8.70
Nigeria	0.33	0.30	0.29	0.29	218	236	225	225	0.33	0.33	0.30	0.30	0.00	0.00	-0.03	-7.69
Sudan	0.10	0.06	0.05	0.05	435	454	435	435	0.20	0.13	0.09	0.09	0.00	0.00	-0.04	-28.00
<b>South America</b>																
Brazil	1.40	0.90	1.10	1.10	1,353	1,452	1,465	1,484	8.70	6.00	7.40	7.50	0.10	1.35	1.50	25.00
Argentina	0.53	0.36	0.58	0.57	411	454	488	477	1.00	0.75	1.30	1.25	-0.05	-3.85	0.50	66.67
Paraguay	0.08	0.05	0.03	0.03	340	363	399	399	0.13	0.08	0.06	0.06	0.00	0.00	-0.02	-26.67
<b>Middle East</b>																
Turkey	0.49	0.41	0.33	0.33	1,529	1,407	1,484	1,517	3.44	2.65	2.25	2.30	0.05	2.22	-0.35	-13.21
Syria	0.15	0.13	0.10	0.10	1,306	1,263	1,306	1,306	0.90	0.73	0.60	0.60	0.00	0.00	-0.13	-17.24
Iran	0.12	0.11	0.10	0.10	587	591	599	599	0.31	0.29	0.28	0.28	0.00	0.00	-0.01	-3.51
<b>Australia</b>	0.66	0.45	0.42	0.45	1,828	2,251	2,151	2,006	5.50	4.60	4.10	4.10	0.00	0.00	-0.50	-10.87
<b>European Union - 28</b>	0.35	0.36	0.32	0.31	984	913	1,099	1,120	1.60	1.50	1.60	1.60	0.01	0.31	0.10	6.88
Greece	0.29	0.29	0.25	0.25	1,016	917	1,176	1,217	1.33	1.20	1.35	1.37	0.02	1.48	0.17	14.17
Spain	0.07	0.07	0.06	0.06	845	893	799	748	0.26	0.29	0.24	0.22	-0.02	-6.38	-0.07	-23.34
<b>Egypt</b>	0.22	0.14	0.13	0.13	737	746	754	729	0.75	0.49	0.45	0.44	-0.02	-3.33	-0.06	-11.22
<b>Mexico</b>	0.19	0.16	0.12	0.12	1,338	1,512	1,531	1,628	1.18	1.09	0.83	0.89	0.06	7.23	-0.20	-18.35
<b>Others</b>	2.38	2.38	2.24	2.29	311	294	298	300	3.40	3.21	3.06	3.15	0.09	2.77	-0.06	-1.93

**TABLE 18**

The table below presents a record of the differences between the April projection and the final Estimate. Using world wheat production as an example, the "root mean square error" means that chances are 2 out of 3 that the current forecast will not be above or below the final estimate by more than 0.5 percent. Chances are 9 out of 10 (90% confidence level) that the difference will not exceed 0.9 percent. The average difference between the April projection and the final estimate is 2.0 million tons, ranging from 0.1 million to 6.8 million tons. The April projection has been below the estimate 21 times and above 11 times.

**RELIABILITY OF PRODUCTION PROJECTIONS 1/**

Commodity and Region	Root mean square error	90 percent confidence interval	Difference between forecast and final estimate				
			Average	Smallest	Largest	Years	
						Below final	Above final
	Percent		---Million metric tons---				
<i>WHEAT</i>							
World	0.5	0.9	2.0	0.1	6.8	21	11
U.S.	0.1	0.2	0.0	0.0	0.3	12	9
Foreign	0.6	1.0	2.0	0.2	6.8	21	11
<i>COARSE GRAINS 2/</i>							
World	0.9	1.5	6.8	0.3	19.2	26	6
U.S.	0.2	0.3	0.1	0.0	1.3	12	7
Foreign	1.3	2.2	6.9	0.3	19.2	26	6
<i>RICE (Milled)</i>							
World	1.4	2.3	3.4	0.2	13.3	26	6
U.S.	1.5	2.5	0.1	0.0	0.2	11	5
Foreign	1.4	2.3	3.4	0.1	13.3	26	6
<i>SOYBEANS</i>							
World	1.7	2.9	2.3	0.2	7.9	18	14
U.S.	1.4	2.3	0.6	0.0	2.5	14	11
Foreign	2.9	4.9	2.1	0.0	8.1	20	12
<i>COTTON</i>			---Million 480-lb. bales---				
World	1.5	2.6	1.0	0.0	5.2	25	6
U.S.	0.3	0.5	0.0	0.0	0.2	13	11
Foreign	1.9	3.1	1.0	0.0	5.1	24	7
<b>UNITED STATES</b>			-----Million bushels-----				
<i>CORN</i>	0.2	0.3	2	0	38	1	2
<i>SORGHUM</i>	0.2	0.3	0	0	4	0	2
<i>BARLEY</i>	0.5	0.9	1	0	11	12	4
<i>OATS</i>	0.2	0.4	0	0	2	4	3

1/ Marketing years 1981/82 through 2012/13. Final for grains, soybeans and cotton is defined as the first November estimate following the marketing year for 1981/82 through 2012/13.

2/ Includes corn, sorghum, barley, oats, rye, millet, and mixed grain